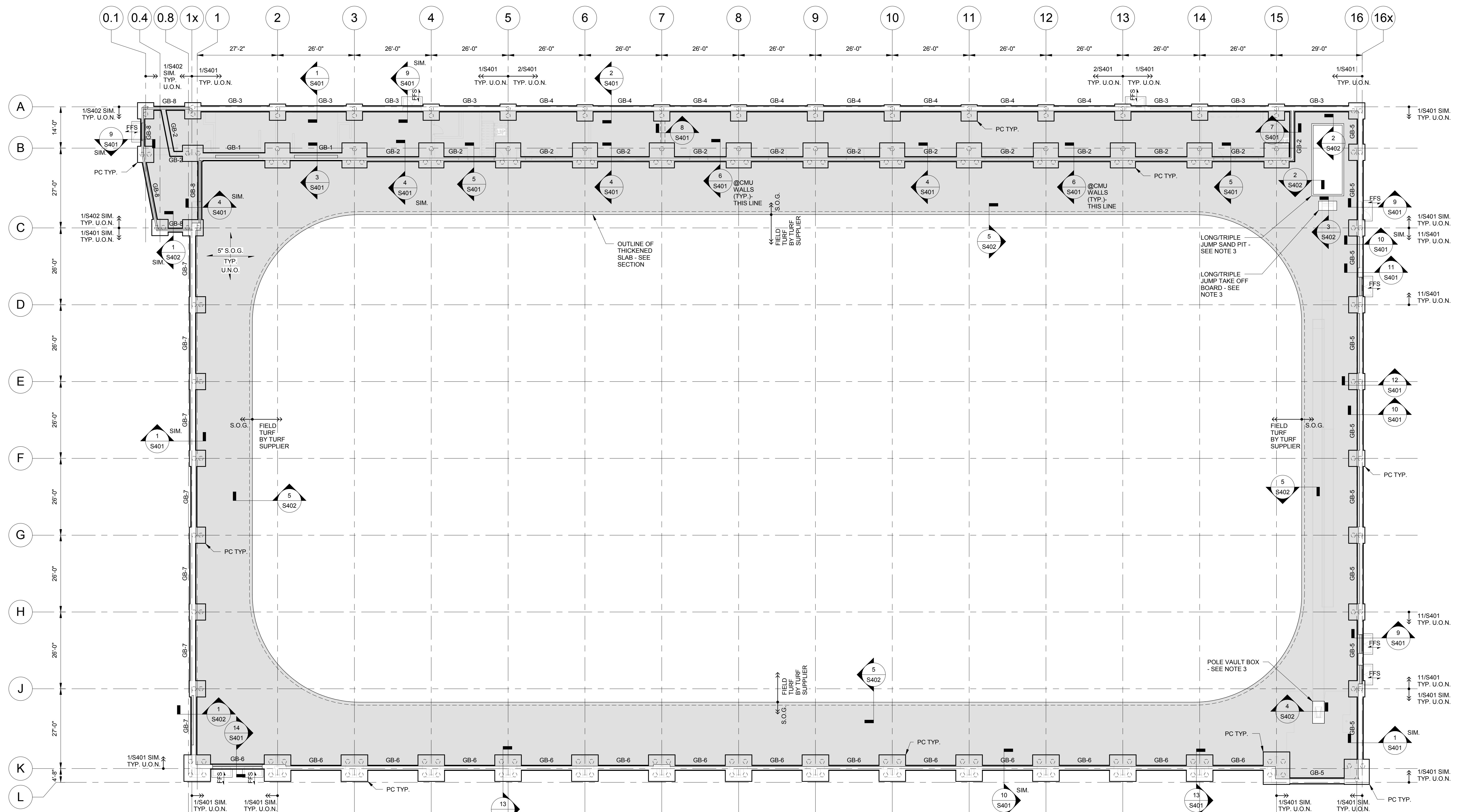


Sheet Issue Date:	
Designed:	ASK
Drafted:	BSA
Checked:	NSD
Revisions:	
No.	Date Description

BARBER & HOFFMAN, INC.
Consulting Engineers
Cleveland, OH
Columbus, OH
Cranberry Twp., PA
8720 Orion Place, Suite 120
Columbus, OH 43240
614-825-9580 / (F) 614-825-9581
barberhoffman.com



GRADE BEAM SCHEDULE

MARK	WIDTH	DEPTH	BOTTOM BARS	TOP BARS	SIZE	TYPE	STIRRUPS (EA. END)	REMARKS
GB-1	2'-8"	2'-0"	4 - #8	4 - #8	-	-	-	-
GB-2	1'-8"	2'-0"	3 - #7	3 - #7	-	-	-	-
GB-3	2'-0"	2'-0"	4 - #7	4 - #7	-	-	-	-
GB-4	2'-0"	2'-0"	4 - #7	4 - #7	#3	U2	8 @ 12" O.C.	EACH END
GB-5	2'-0"	2'-0"	4 - #8	4 - #8	#3	U2	8 @ 12" O.C.	EACH END @ BAYS J-H AND C-D ONLY
GB-6	1'-8"	3'-0"	3 - #8	3 - #8	-	-	-	-
GB-7	2'-0"	2'-0"	4 - #8	4 - #8	-	-	-	-
GB-8	1'-4"	2'-0"	3 - #7	3 - #7	-	-	-	-

STIRRUP DETAILS

FOUNDATION AND S.O.G. PLAN
1/16" = 1'-0"

- NOTES:**
- TOP OF FINISHED FIRST FLOOR IS AT EL. 100'-0" = REF. EL. 0'-0".
 - TOP OF ALL GRADE BEAMS (GB-1) IS AT EL. -1'-4" AND IS REFERENCED FROM TOP OF FINISHED FIRST FLOOR S.O.G. (REF. EL. 0'-0").
 - FINAL LOCATIONS, LAYOUT AND SIZES OF ALL DEPRESSED SLABS / SAND PITS / BOXES FOR SPECIALTY SPORTS (LONG/TRIPLE JUMP, POLE VAULT ETC.) SHALL BE CLOSELY COORDINATED BY THE CONTRACTOR WITH THE SPORTS EQUIPMENT SUPPLIER/INSTALLER. COORDINATE THE LOCATIONS AND LAYOUT OF ALL CAST-IN-PLACE EMBED PLATES / ANGLES WITH SPORTS EQUIPMENT SUPPLIER/INSTALLER, PRIOR TO PLACEMENT OF CONCRETE AT SUCH LOCATIONS. SEE ARCHITECTS DRAWINGS FOR ADDITIONAL INFORMATION. CONCRETE FINISH IN THE VICINITY OF SUCH AREAS SHALL BE COORDINATED CLOSELY WITH THE FINAL FINISHES/FLOOR COVERINGS TO BE INSTALLED AT THESE LOCATIONS, PRIOR TO THE PLACEMENT OF CONCRETE.
 - PROVIDE ADDITIONAL TOP AND BOTTOM REINFORCING BARS AT ALL RE-ENTRANT CORNERS IN S.O.G. CONSTRUCTION PER TYP. DETAIL ON DRAWING S002.
 - PROVIDE THICKENED SLAB UNDER ALL INTERIOR CMU WALLS - PER SECTION 8/S401 - TYPICAL U.O.N.
- LEGEND**
- PC DENOTES REINFORCED CONCRETE PILE CAPS. TOP OF ALL PILE CAPS IS AT EL. -1'-4" AND IS REFERENCED FROM TOP OF FINISHED FIRST FLOOR S.O.G. (REF. EL. 0'-0"). DESIGN AND DETAILING OF PILE CAPS TO BE FURNISHED BY THE PILE DESIGN PROFESSIONAL, HIRED BY THE PILE CONTRACTOR. SEE DRAWING S402 AND SPECIFICATIONS FOR ALL ADDITIONAL INFORMATION.
 - 5' S.O.G. TYP. U.O.N. DENOTES 5' THICK CONCRETE SLAB ON GRADE (S.O.G.) REINFORCED WITH SYNTHETIC 'MACRO' FIBER REINFORCING UNIFORMLY DISPERSED WITHIN THE SLAB CROSS-SECTION. SEE GENERAL NOTES ON DRAWING S001 FOR CONCRETE CONSTRUCTION, TYPICAL DETAILS ON DRAWING S002 AND SPECIFICATIONS FOR ALL ADDITIONAL INFORMATION. CONTRACTOR TO COORDINATE THE FLATNESS AND LEVELNESS REQUIREMENTS FOR THE INTERIOR SLABS ON GRADE AT THE TRACK/ATHLETICS AREAS WITH THE FLOOR FINISH MATERIALS. CONTRACTOR SHALL COORDINATE THE NEED FOR CONTROL JOINTS WITH FINISHED FLOOR SUPPLIERS AT SPECIALTY FLOORS. SUBMIT CONTROL AND EXPANSION JOINT LAYOUT FOR REVIEW AND APPROVAL PRIOR TO PLACEMENT OF S.O.G. CONCRETE.
 - GB- DENOTES REINFORCED CONCRETE GRADE BEAMS. SEE SCHEDULE ON THIS DRAWING FOR ALL ADDITIONAL INFORMATION.
 - FFS DENOTES FROST FREE SLAB CONSTRUCTION. SEE TYPICAL DETAIL ON DRAWINGS S002 FOR ADDITIONAL INFORMATION.