

McGill Smith Punshon, Inc.  
 3700 Park 42 Drive Suite 190B  
 Cincinnati, Ohio 45241-2097  
 Tel. 513-750-0004 • Fax 513-563-7099  
 Engineers • Architects • Surveyors  
 Planners • Landscape Architects

Drawn By CAR Project Mgr. FAE

CAD File

X-Ref File

Issue/Revision	Revision Number	Date
BID SET		11/16/15

**GENERAL NOTES**

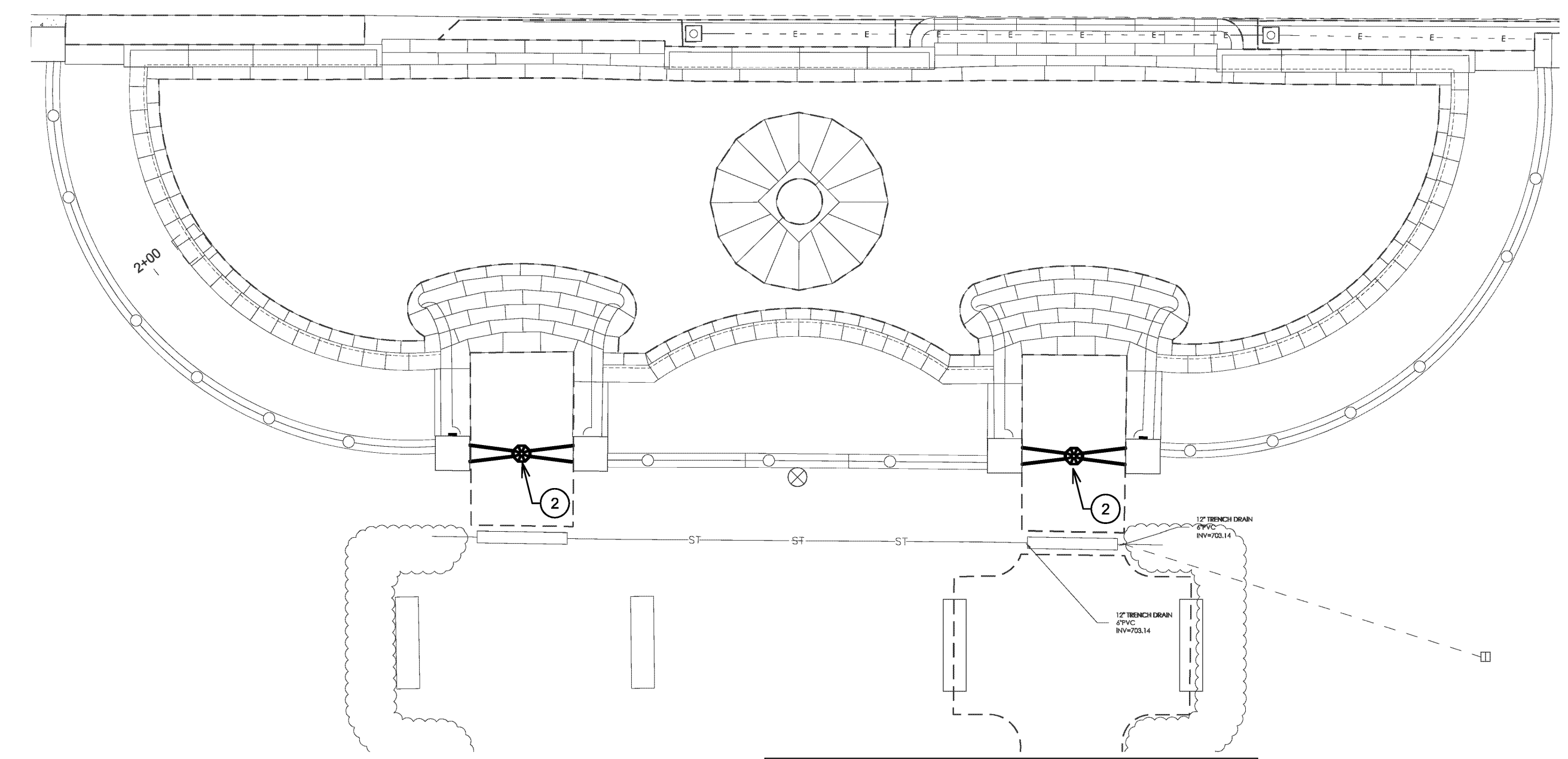
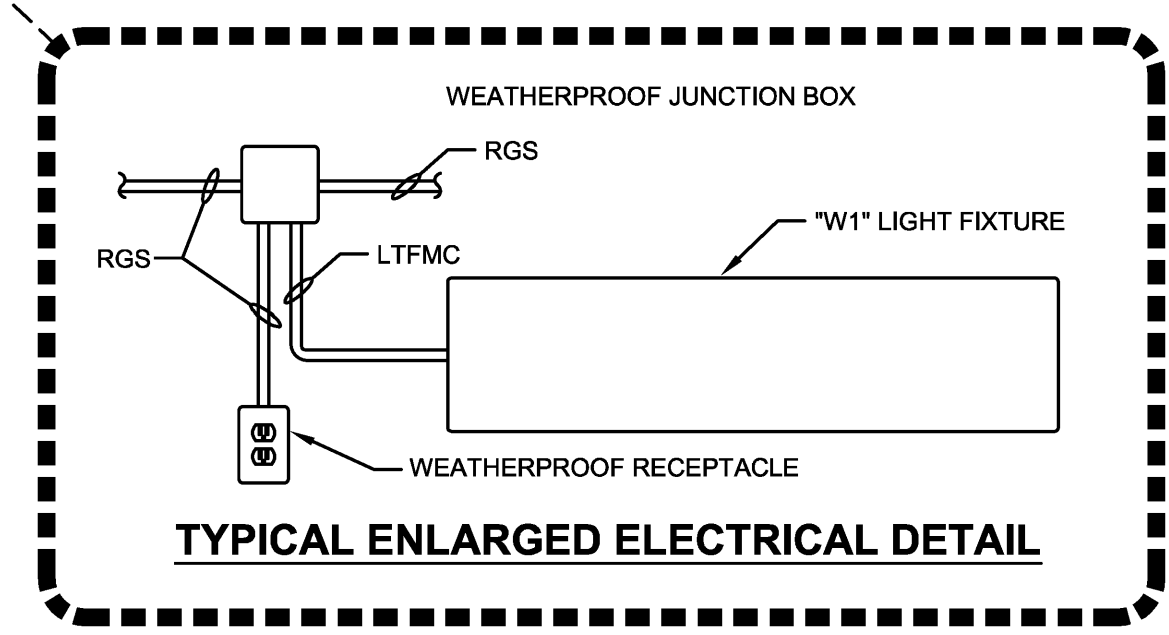
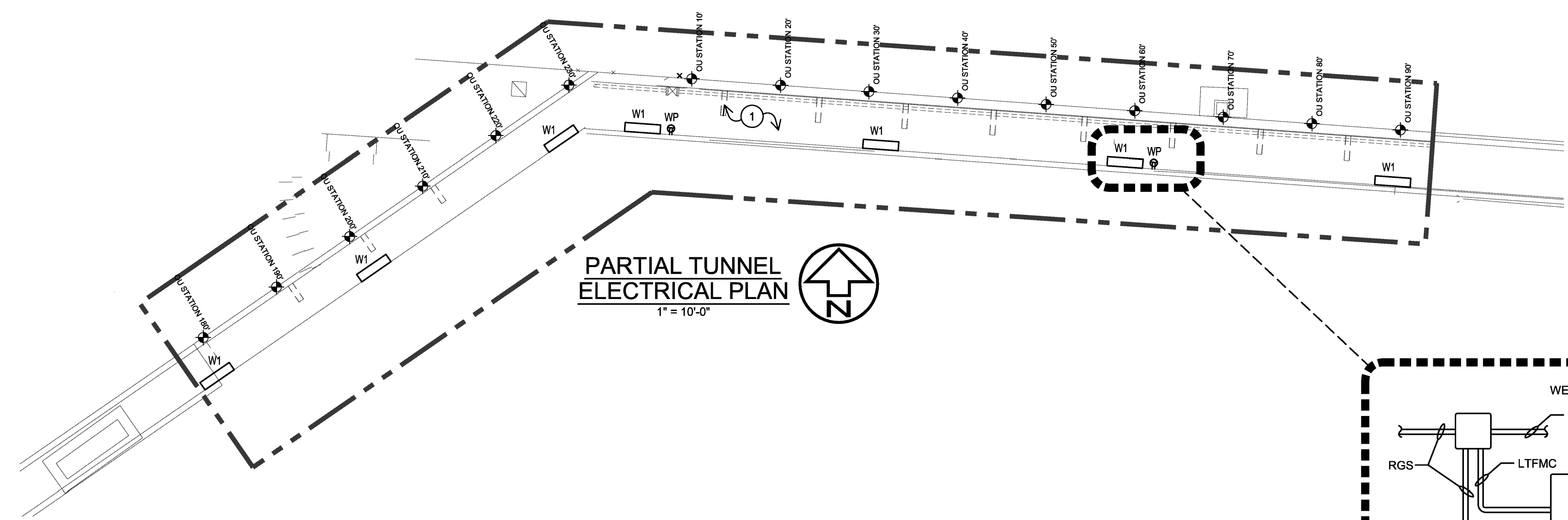
- ALL NEW CONDUITS SHALL BE 1" RGS MINIMUM AND MOUNTED TO WALLS OR TUNNEL. MOUNT LIGHT FIXTURES, RECEPTACLES, SWITCHES AND CONDUITS TO WALLS AS DETAILED. DO NOT MOUNT TO TUNNEL CEILING.
- ALL LIGHTING CIRCUITS SHALL BE 2 #8, #10 GND. ALL RECEPTACLE CIRCUITS SHALL BE 2 #6, #10 GND. WHERE LIGHTING AND RECEPTACLE CIRCUITS ARE COMBINED, THE GROUND CONDUCTOR SHALL BE #8 GND AND CONDUIT SHALL BE 1" RGS MINIMUM.
- ROUTE NEW CONDUITS TO AVOID EXISTING STEAM PIPING (12 INCH SEPARATION MINIMUM), HANGERS AND CABLE TRAYS.
- MOUNT LIGHT FIXTURES BETWEEN 6 AND 12 INCHES BELOW NEW CONCRETE CEILING. HOLD TIGHT TO CEILING WHERE CONDITIONS PRECLUDE MOUNTING DUE TO EXISTING CONDITIONS.
- MOUNT RECEPTACLES AND LIGHT SWITCHES BETWEEN 12 AND 18 INCHES BELOW NEW CONCRETE CEILING.
- ALL CONDUIT THREADS, DEVICE BOXES AND FIXTURE WHIPS SHALL BE INSTALLED WATERTIGHT.
- CONNECT NEW LIGHT FIXTURES TO EXISTING 20A, 120 VOLT, LIGHTING SUPPLY CIRCUIT. PROVIDE NEW CONDUIT AND CONDUCTORS FROM POINT OF ORIGINATION.
- CONNECT NEW MAINTENANCE RECEPTACLES TO EXISTING 20A, 120 VOLT RECEPTACLE SUPPLY CIRCUITS. CONNECT NO MORE THAN (10) TEN RECEPTACLES TO INDIVIDUAL CIRCUITS. CONNECT RECEPTACLES EVENLY ACROSS AVAILABLE EXISTING CIRCUITS. PROVIDE NEW CONDUIT AND CONDUCTORS FROM POINT OF ORIGINATION.
- SPACE LIGHT FIXTURES APPROXIMATELY 25 FEET ON CENTER. ADJUST TO AVOID EXISTING OBSTRUCTIONS AND CONDITIONS.
- SPACE RECEPTACLES APPROXIMATELY 60 FEET ON CENTER. ADJUST TO AVOID EXISTING OBSTRUCTIONS AND CONDITIONS.

ELECTRICAL SYMBOL LEGEND	
SYMBOL	DESCRIPTION
	DUPLEX RECEPTACLE (20A, 125V) GROUND FAULT CIRCUIT INTERRUPTER, "WP" = WEATHERPROOF
	SWITCH (20A, 120/277V, SINGLE POLE) "3" = THREE-WAY
	LUMINAIRE - MOUNTED AS INDICATED ON DRAWINGS

LUMINAIRE SCHEDULE										
DESIGNATION	LAMP(S)			BALLAST(S)		FIXTURE WATTAGE	FIXTURE VOLTAGE	FIXTURE DESCRIPTION	CATALOG SERIES	NOTES
	TYPE	WATTS	QUANTITY	TYPE	QUANTITY					
W1	LED	43	NA	NA	NA	43	UNV	LED 4'-0" WALL MOUNTED LIGHT FIXTURE, NON-CORROSIIVE HOUSING, WHITE ONE PIECE, MOLDED FIBERGLASS REINFORCED POLYESTER BODY, HIGH IMPACT LENS, CONTINUOUS CLOSED GASKET AROUND ENCLOSURE. WET LOCATION LISTED.	DAY-BRITE V2 VAPORLUME LED	

**PLAN NOTES**

- EC SHALL REMOVE EXISTING (APPROX. 7) LIGHTING FIXTURES AND (APPROX. 2) CONVENIENCE ELECTRICAL RECEPTACLES ALONG WITH WIRING AND CONDUIT BACK TO SOURCE.
- REMOVE WROUGHT IRON LIGHT FIXTURE AND SUPPORTS. DISCONNECT AND STORE FOR FUTURE RE-INSTALLATION. FIXTURE SHALL BE REFURBISHED AND RE-INSTALLED. ALTERNATE, FIXTURE SHALL BE REFURBISHED WITH AN LED LIGHT SOURCE.



© COPYRIGHT 2015, MCGILL SMITH PUNSHON, INC.

**COLLEGE GREEN UPGRADE  
 CLASS GATE  
 OHIO UNIVERSITY**  
 ATHENS, OHIO 45701  
 ATHENS COUNTY, OHIO



Sheet Title  
 PARTIAL TUNNEL AND  
 LANDSCAPING ELECTRICAL  
 PLAN  
 Project No. 13412.00  
 Scale AS NOTED  
 Sheet No. **E1.1**  
 File No. 13-412