

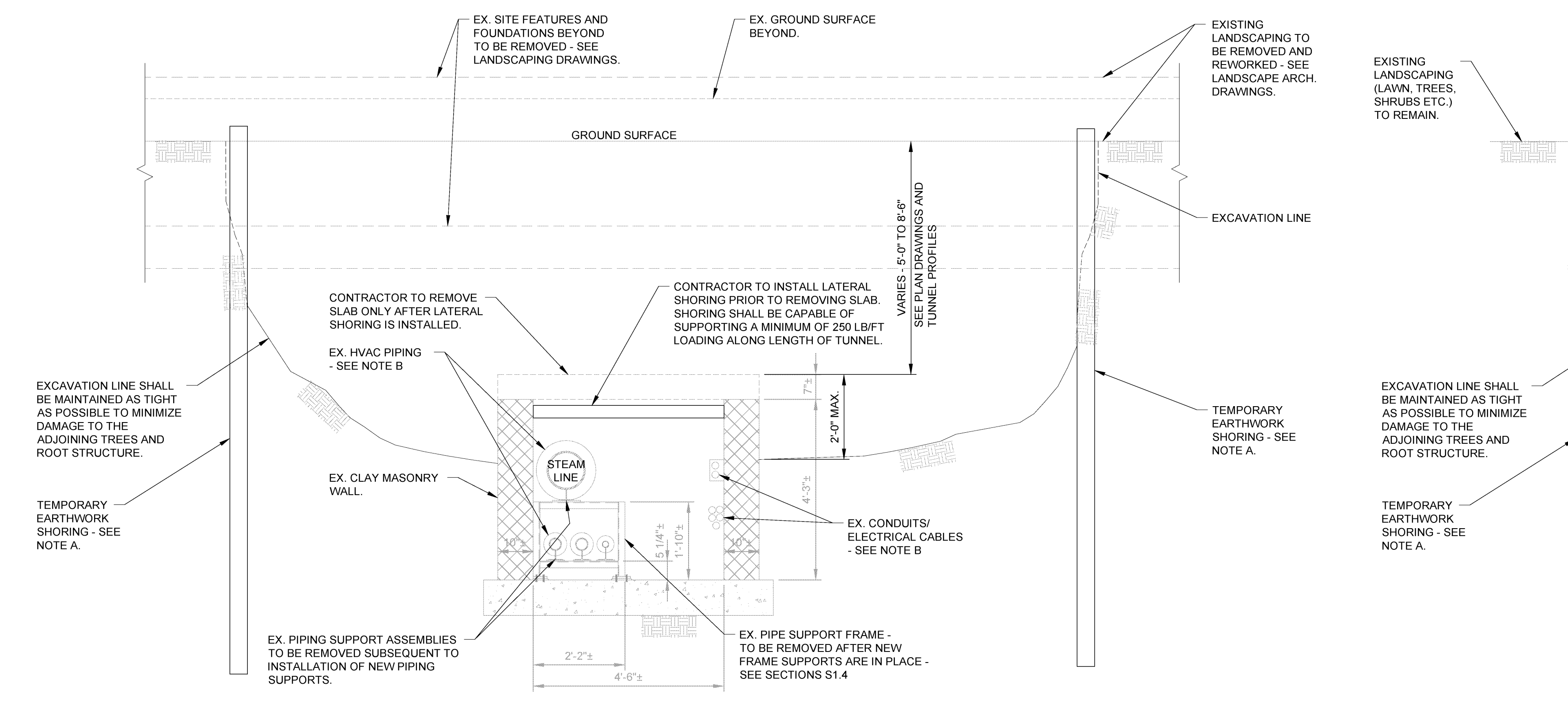
McGill Smith Punshon, Inc.
3700 Park 42 Drive Suite 190B
Cincinnati, Ohio 45241-2097
Tel. 513-759-0004 • Fax 513-563-7099
Engineers • Architects • Surveyors
Planners • Landscape Architects

Drawn By: CJA Project Mgr.: NSD

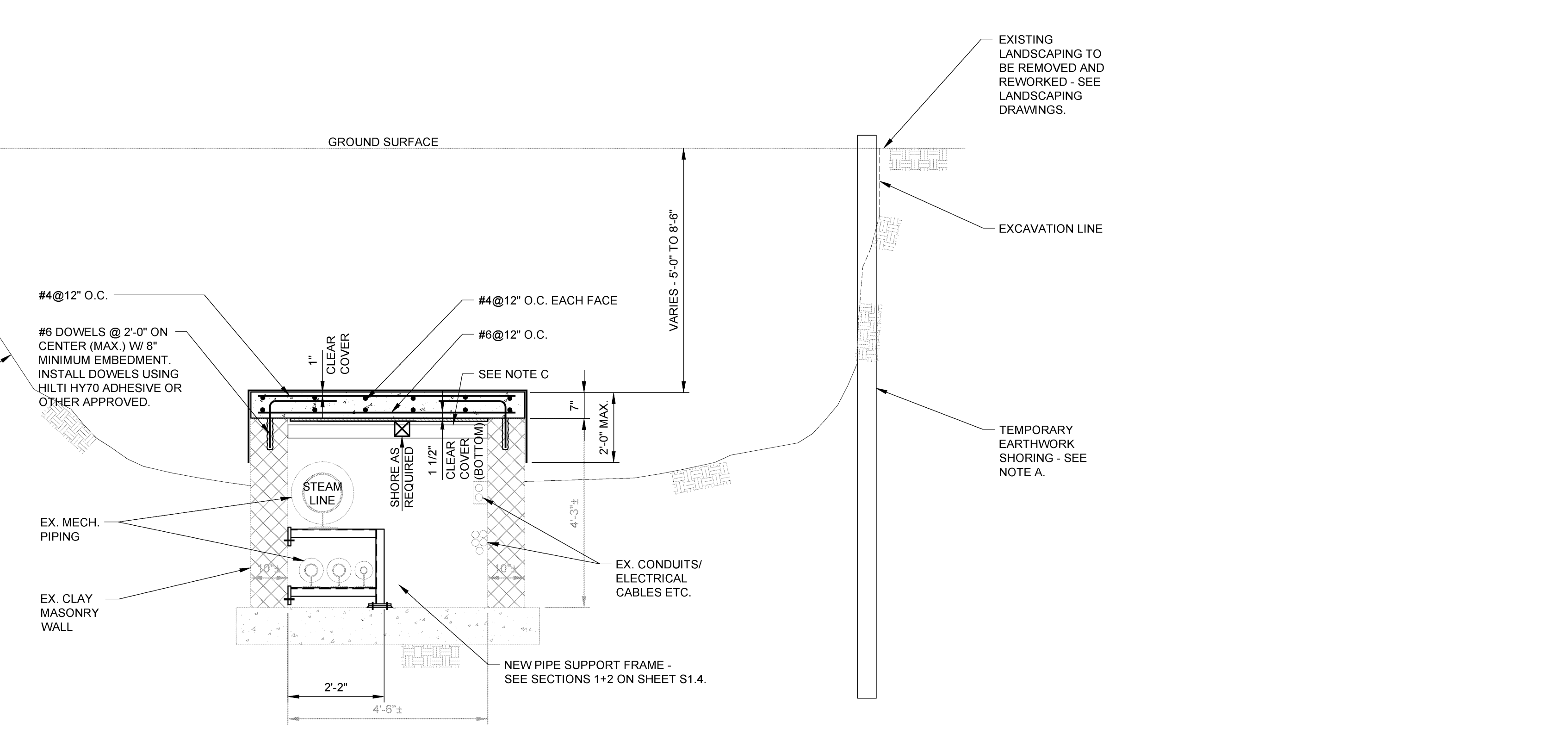
CAD File
X-Ref File

Issue/Revision	Revision Number	Date
BID SET		11/16/15

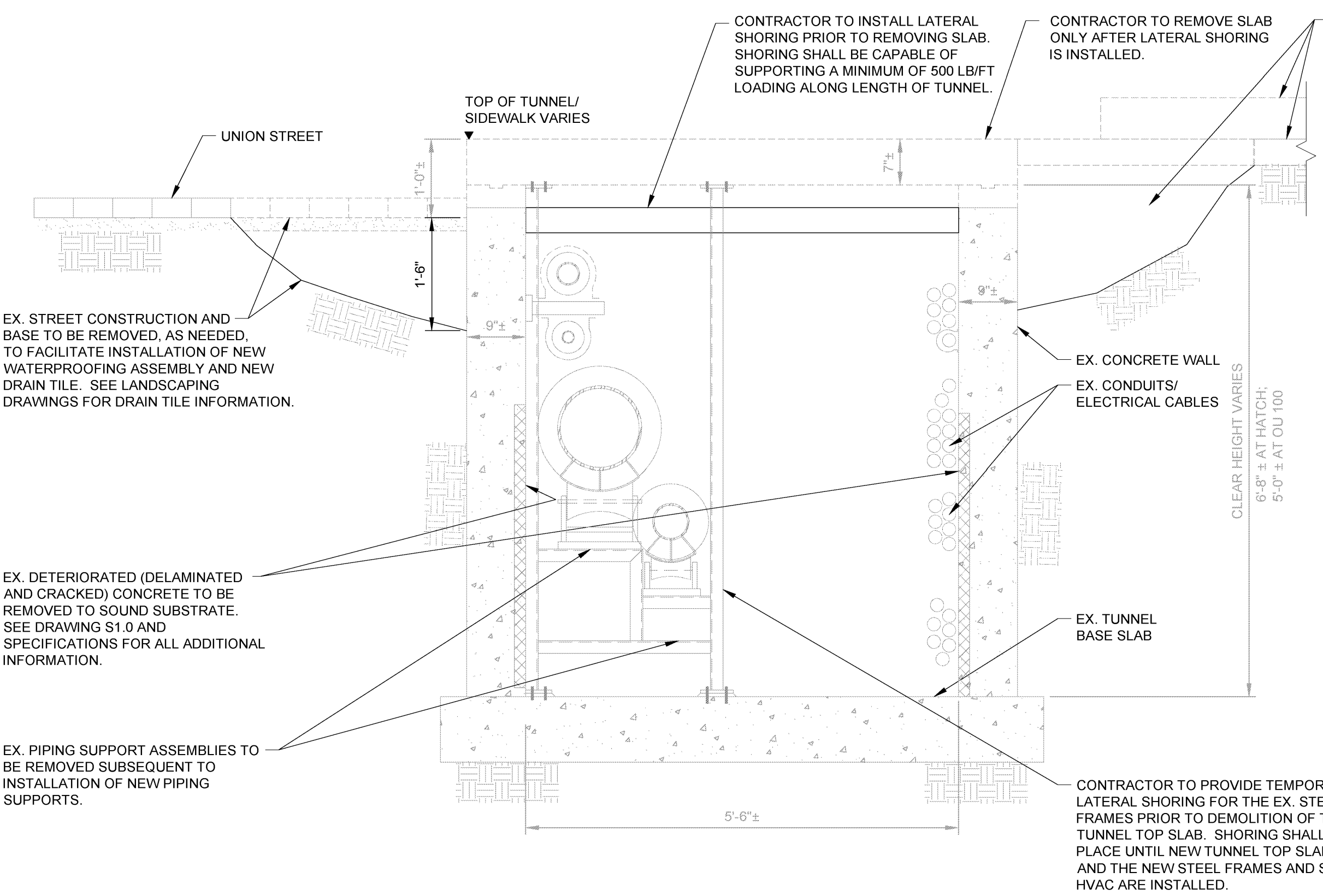
© COPYRIGHT 2015, MCGILL SMITH PUNSHON, INC.



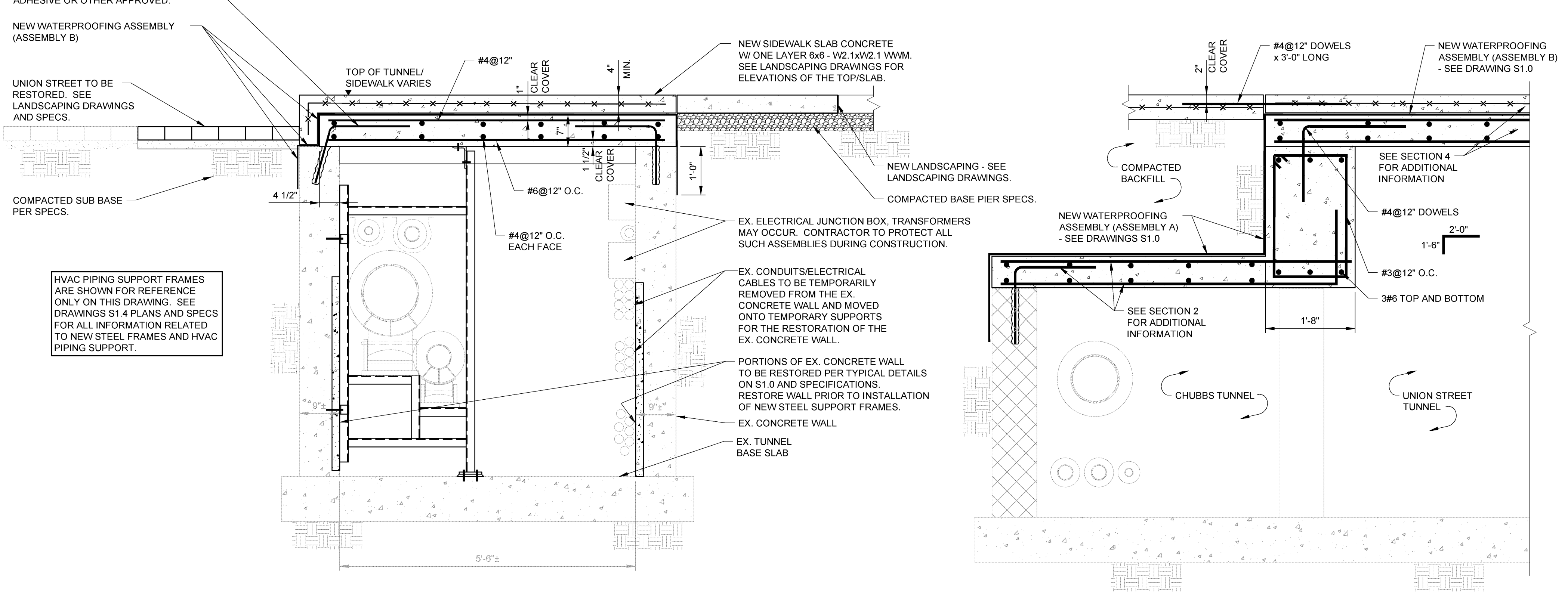
SECTION 1
1/2"=1'-0"
(TYPICAL TUNNEL TOP DEMOLITION - CHUBBS TUNNEL)



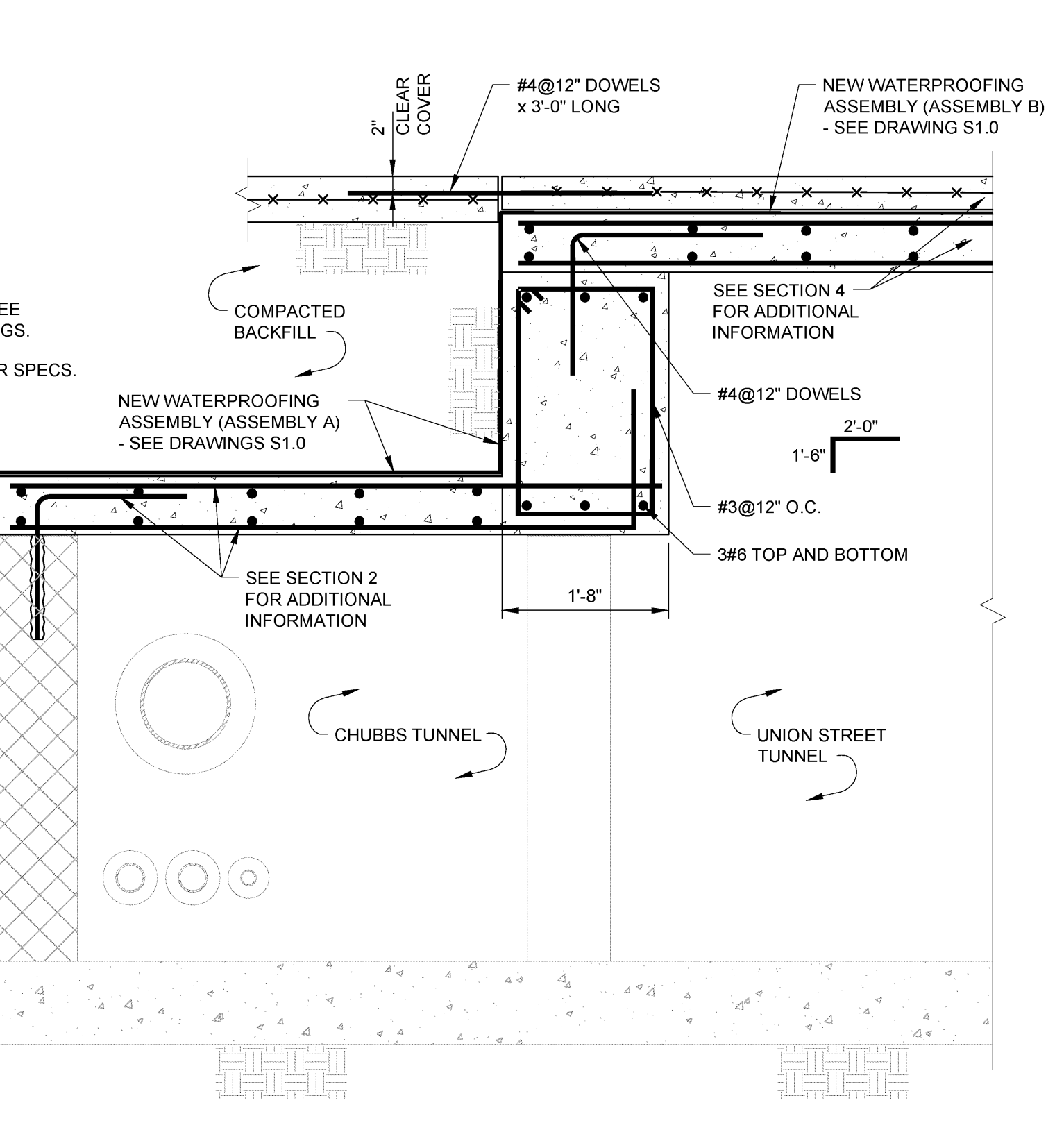
SECTION 2
1/2"=1'-0"
(TYPICAL TUNNEL TOP REPLACEMENT - CHUBBS TUNNEL)



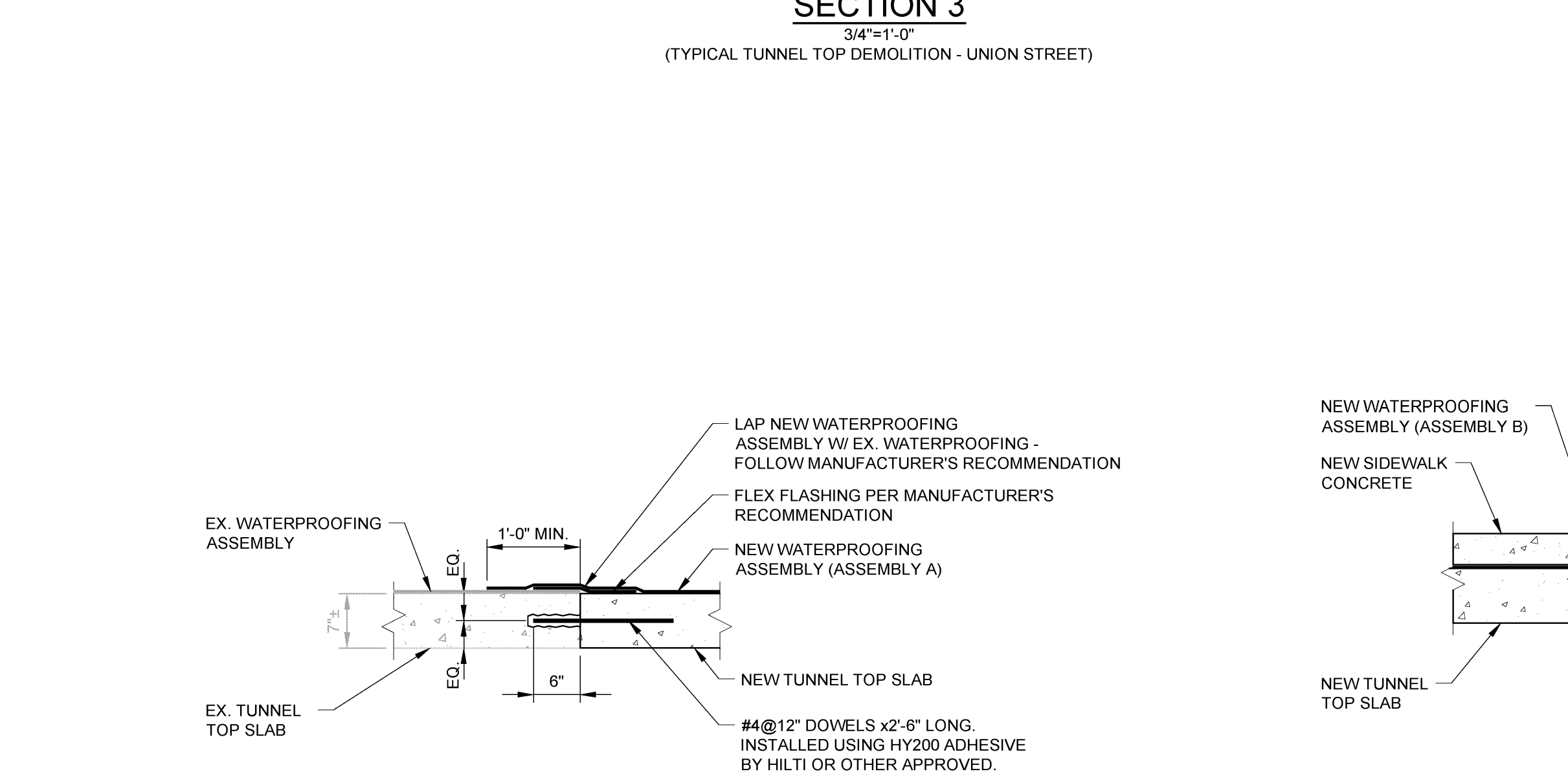
SECTION 3
3/4"=1'-0"
(TYPICAL TUNNEL TOP DEMOLITION - UNION STREET)



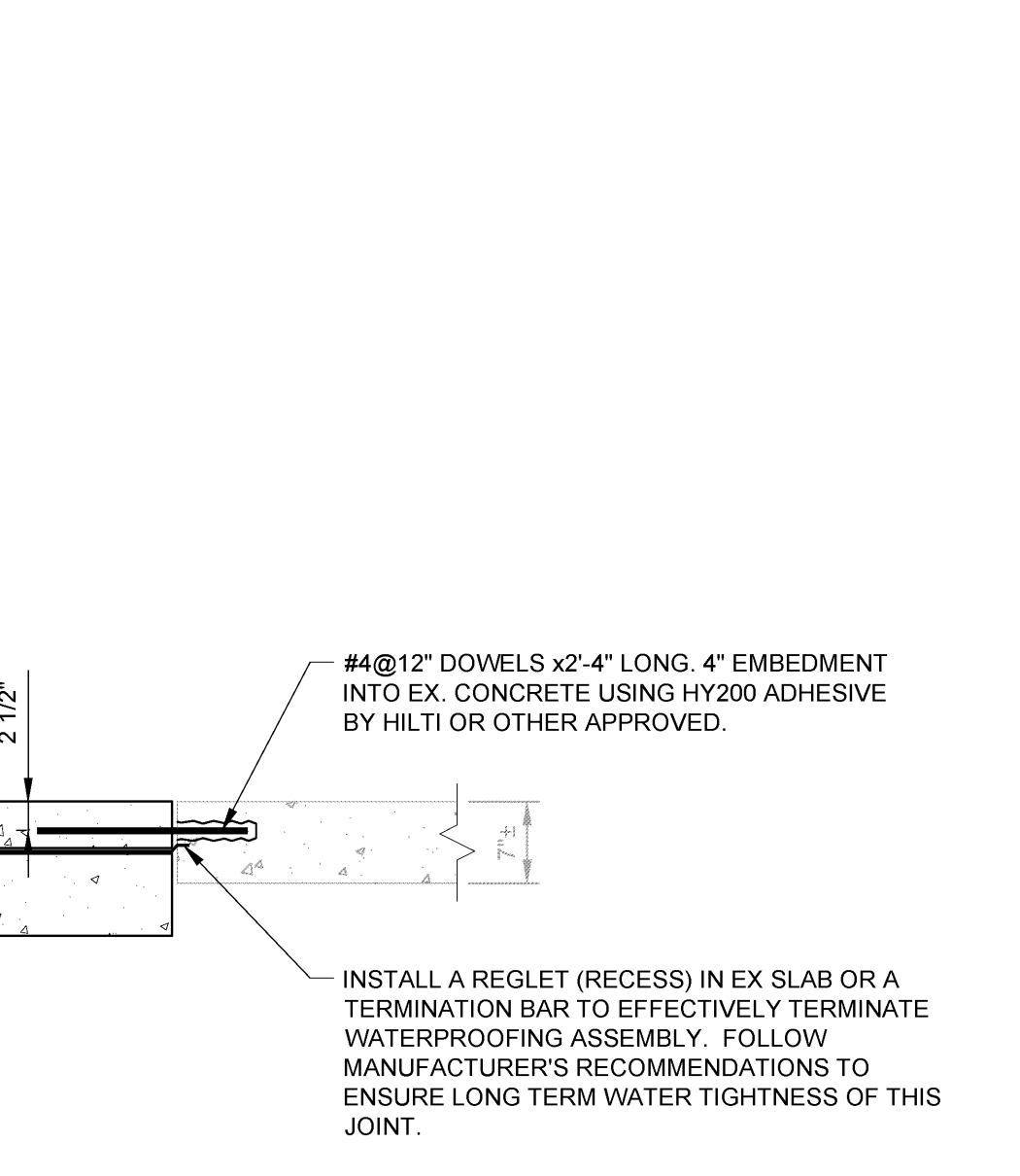
SECTION 4
3/4"=1'-0"
(TYPICAL TUNNEL TOP REPLACEMENT - UNION STREET)



SECTION 5
3/4"=1'-0"



SECTION 6
3/4"=1'-0"
(TYPICAL DETAIL AT INTERFACE OF NEW TUNNEL SLAB W/ EXISTING CHUBBS/CROSS TUNNELS)



SECTION 7
3/4"=1'-0"
NEW TUNNEL TOP SLAB REINFORCING NOT SHOWN FOR CLARITY

TYPICAL NOTES: (APPLY TO ALL SECTIONS AND PLANS)

NOTE A: EARTHWORK SHORING
CONTRACTOR TO INSTALL TEMPORARY EARTHWORK SHORING, AS NEEDED, TO FACILITATE EXCAVATION OF EXISTING LANDSCAPING AND/OR SIDEWALKS AND THE UNDERLYING SOIL WITHOUT IMPACTING THE INTEGRITY OF ADJOINING SITE FEATURES, TREES, VEGETATION, STREETS AND SIDEWALKS, CURBS, RETAINING WALLS, ETC. AND TO FACILITATE REMOVAL AND REPLACEMENT OF TUNNEL TOP CONCRETE SLAB.

NOTE B: PROTECTION OF UTILITIES, M/E/P PIPING AND CONDUITS WITHIN TUNNEL SPACE
SIGNIFICANT AMOUNT OF M/E/P PIPING, CONDUITS ETC. OCCURS WITHIN THE TUNNEL SPACE. PIPING AND CONDUITS SHOWN IN PLAN ARE FOR REFERENCE ONLY. CONTRACTOR SHALL PROTECT ALL PIPING AND CONDUITS WITHIN THE TUNNEL SPACE DURING THE ENTIRE CONSTRUCTION PHASE (DEMOLITION THRU COMPLETION OF THE TUNNEL FLOOR WORK). A MAJORITY OF ALL M/E/P INFRASTRUCTURE IS SUPPORTED FROM THE TUNNEL FLOOR WITH THE EXCEPTION OF A FEW AREAS WHERE CONDUITS AND/OR SMALL PIPES ARE SUPPORTED OFF THE TUNNEL WALLS. CONTRACTOR SHALL PROVIDE TEMPORARY SUPPORTS FOR ALL WALL SUPPORTED PIPING/CONDUITS DURING THE CONSTRUCTION PHASE AS NEEDED TO FACILITATE THE REPAIR OF THE DETERIORATED PORTIONS OF CONCRETE WALLS. CONTRACTOR'S BASE BID SHALL ACCOUNT FOR ANY COSTS ASSOCIATED WITH PROVIDING TEMPORARY SUPPORTS FOR PIPING/CONDUITS AT SUCH LOCATIONS. THE EXISTING STEEL FRAMES SUPPORTING THE STEAM LINES, CONDENSATE AND OTHER M/E/P PIPING SHALL REMAIN IN PLACE UNTIL THE NEW STEEL FRAMES ARE INSTALLED AND FULLY SUPPORTING THE EXISTING PIPES. COORDINATE TEMPORARY UTILITY SHUT DOWNS WITH OHIO UNIVERSITY, AS NEEDED, TO FACILITATE AFOREMENTIONED WORK.

NOTE C: TEMPORARY BRACING OF TUNNEL MASONRY/CONCRETE WALLS
CONTRACTOR SHALL PROVIDE TEMPORARY BRACING (LATERAL) TO ENSURE STABILITY OF THE TUNNEL WALLS DURING DEMOLITION AND UNTIL THE NEW CONCRETE SLAB IS INSTALLED IN PLACE AND THE CONCRETE HAS ACHIEVED THE SPECIFIED MINIMUM COMPRESSIVE STRENGTH. DEMOLITION OF THE EXISTING TUNNEL TOP SLAB SHALL NOT COMMENCE UNTIL THE LATERAL BRACING IS INSTALLED IN PLACE. DESIGN OF THE LATERAL BRACING AND THE STABILITY OF THE TUNNEL WALLS DURING THE CONSTRUCTION PHASE SHALL REMAIN THE RESPONSIBILITY OF THE CONTRACTOR.

NOTE D: PROTECTION OF BURIED UTILITIES BETWEEN THE TUNNEL TOP AND STREET LEVEL
EXISTING UTILITIES (GAS LINE, HIGH VOLTAGE ELECTRIC, WATER LINES ETC.) OCCUR IN THE VICINITY OF THE UNION STREET LEVEL AND IN THE SPACE BETWEEN THE GROUND SURFACE AND THE TOP OF CHUBBS TUNNEL. SEE LANDSCAPING DRAWINGS FOR APPROXIMATE LAYOUTS OF SUCH UTILITIES. CONTRACTOR SHALL CONTACT THE LOCAL UTILITY COMPANIES TO DETERMINE THE LOCATION, SIZE AND LAYOUT OF ALL SUCH BURIED UTILITIES, AS ACCURATELY AS POSSIBLE, PRIOR TO COMMENCING THE EXCAVATION OPERATIONS. EXCAVATION WORK SHALL BE CARRIED OUT WITH EXTREME CAUTION TO AVOID INFLECTING DAMAGE TO THE EXISTING BURIED UTILITIES. ALL SUCH UTILITIES WILL BE PROTECTED AND SUPPORTED BY THE CONTRACTOR DURING THE ENTIRE CONSTRUCTION PHASE, UNTIL THE TUNNEL TOP REPLACEMENT WORK AND BACKFILLING IS COMPLETED IN THE FIELD.

NOTE E: REINFORCING BARS
ALL MILD STEEL REINFORCING AND ACCESSORIES USED IN THE REPLACEMENT OF THE TUNNEL TOP CONCRETE SLAB SHALL BE EPOXY COATED.

NOTE F: REINFORCING BARS
LOCATE REBAR IN EX. AND NEW CONCRETE SLABS AND WALLS PRIOR TO INSTALLATION OF ADHESIVE ANCHORS. COORDINATE LOCATION OF ATTACHMENT ANGLES/PLATES TO AVOID CUTTING REBAR.

BARBER & HOFFMAN, INC.
Consulting Engineers
8720 Orion Place, Suite 380
Columbus, OH 43240
614-825-9590
barberhoffman.com

COLLEGE GREEN UPGRADE
CLASS GATE AND TUNNEL
OHIO UNIVERSITY
ATHENS, OHIO 45701
ATHENS COUNTY, OHIO

Sheet Title	Project No.
SECTIONS AND DETAILS	13412.00
Scale	AS NOTED
Sheet No.	S1.3
File No.	13-412