

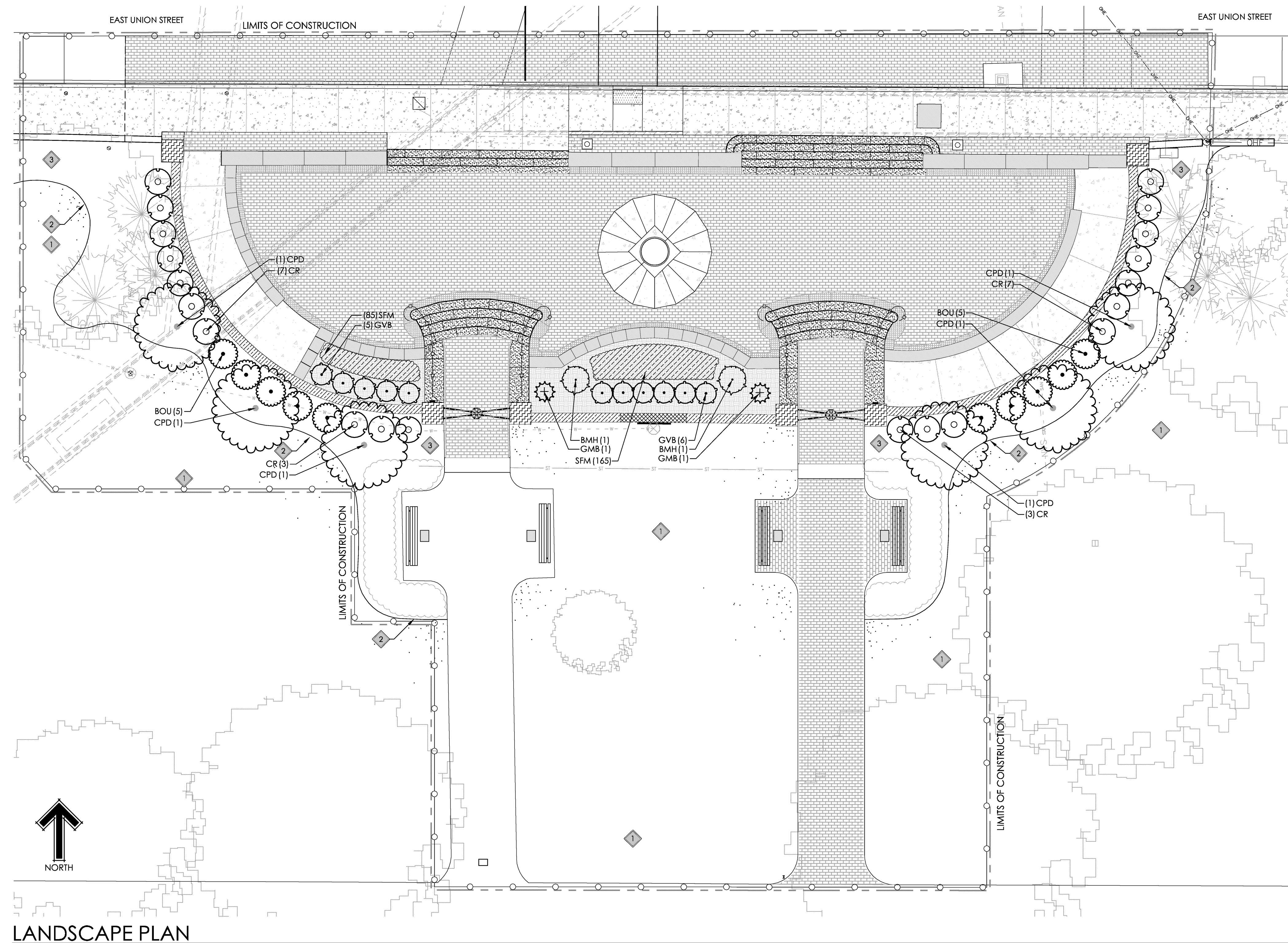


McGill Smith Punshon, Inc.
3700 Park 42 Drive Suite 190B
Cincinnati, Ohio 45241-2097

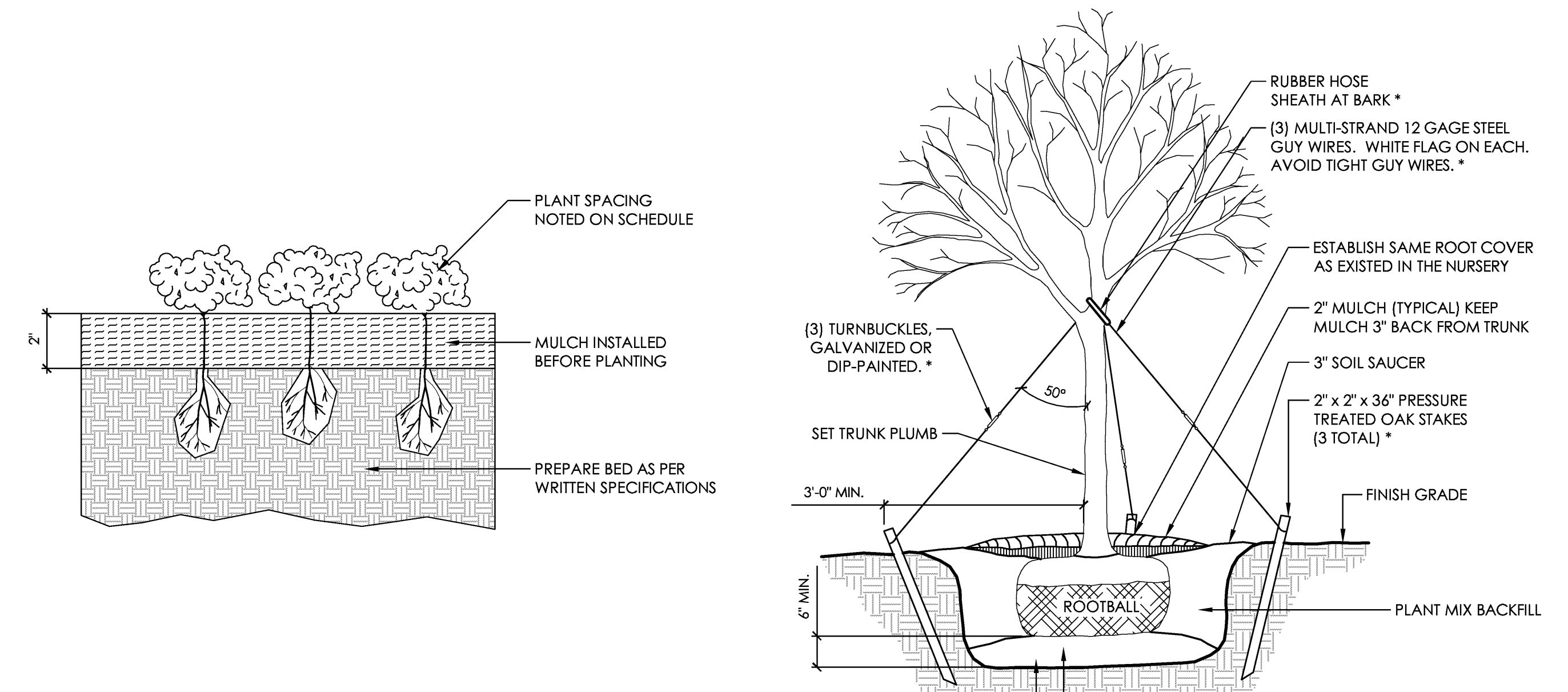
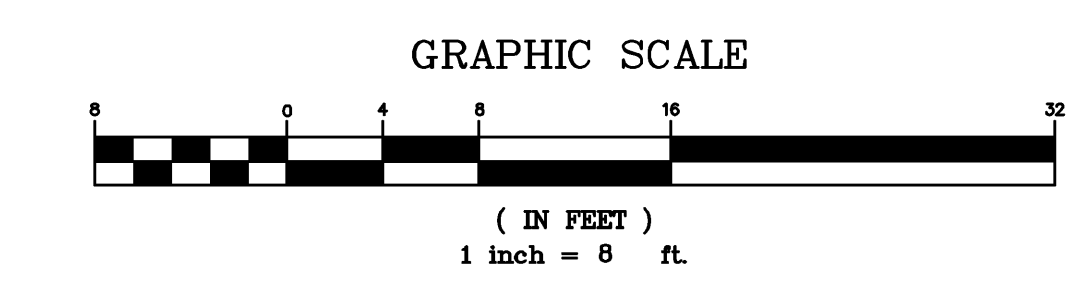
Tel. 513-759-0004 • Fax 513-563-7099
Engineers • Architects • Surveyors
Planners • Landscape Architects

Drawn By	CFB	Project Mgr.	DJF
CAD File	13412008-PLA-00-CLASS GATE		
X-Ref File	13412008-BAS-00		
	13412008-BAS-00-CLASS GATE		
	13412008-TLB-00-CLASS GATE		
Issue/Revision	Revision Number	Date	
BID SET		1/16/15	

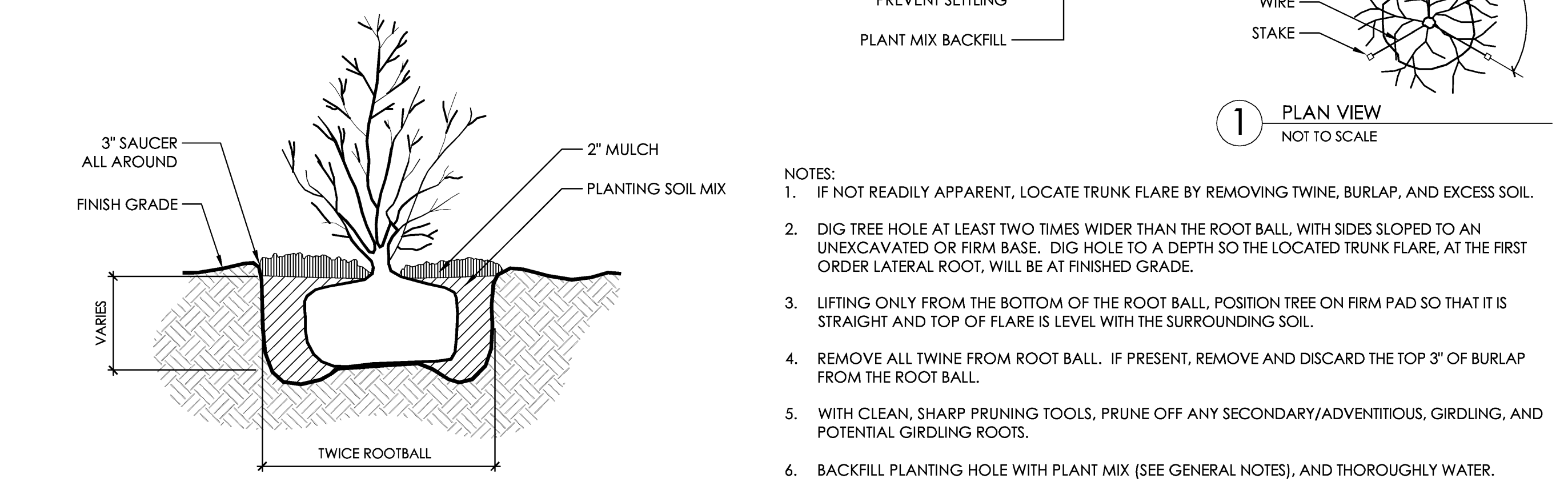
© COPYRIGHT 2015, MCGILL SMITH PUNSHON, INC.



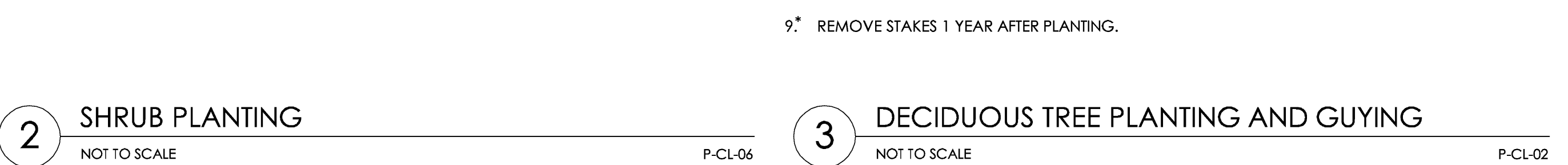
LANDSCAPE PLAN
SCALE: 1/8" = 1'-0"



1 SEASONAL FLOWER PLANTING
NOT TO SCALE P-CL-01



2 SHRUB PLANTING
NOT TO SCALE P-CL-06



3 DECIDUOUS TREE PLANTING AND GUYING
NOT TO SCALE P-CL-02

- NOTES:**
- IF NOT READILY APPARENT, LOCATE TRUNK FLARE BY REMOVING TWINE, BURLAP, AND EXCESS SOIL.
 - DIG TREE HOLE AT LEAST TWO TIMES WIDER THAN THE ROOT BALL, WITH SIDES SLOPED TO AN UNEXCAVATED OR FIRM BASE. DIG HOLE TO A DEPTH SO THE LOCATED TRUNK FLARE, AT THE FIRST ORDER LATERAL ROOT, WILL BE AT FINISHED GRADE.
 - LIFTING ONLY FROM THE BOTTOM OF THE ROOT BALL, POSITION TREE ON FIRM PAD SO THAT IT IS STRAIGHT AND TOP OF FLARE IS LEVEL WITH THE SURROUNDING SOIL.
 - REMOVE ALL TWINE FROM ROOT BALL. IF PRESENT, REMOVE AND DISCARD THE TOP 3\"/>

GENERAL NOTES - PLANTING

- LANDSCAPE CONTRACTOR IS TO VERIFY LOCATIONS OF ALL UTILITIES WITH THE GENERAL CONTRACTOR, OHIO UNIVERSITY PROJECT MANAGER AND UTILITY COMPANIES PRIOR TO BEGINNING CONSTRUCTION. LANDSCAPE CONTRACTOR IS RESPONSIBLE FOR DETERMINING IN THE FIELD ACTUAL LOCATIONS AND ELEVATIONS OF EXISTING UTILITIES. WHETHER INDICATED ON PLANS OR NOT. LANDSCAPE CONTRACTOR MUST CALL THE UTILITIES PROTECTION SERVICE A MINIMUM OF 48 HOURS PRIOR TO CONSTRUCTION. LANDSCAPE CONTRACTOR SHALL BE FULLY RESPONSIBLE FOR DAMAGE OF UTILITY LINES, WHICH IS CAUSED BY THEIR ACTIONS OR THE ACTIONS OF THEIR CONSULTANTS.
- LANDSCAPE CONTRACTOR TO EXAMINE FINISH SURFACE, GRADE ACCURACY AND TOPSOIL FOR DEPTH AND QUALITY; REFER TO SPECIFICATIONS (IF APPLICABLE); IF CONDITIONS ARE UNSATISFACTORY, NOTIFY GENERAL CONTRACTOR OR OHIO UNIVERSITY'S PROJECT MANAGER. DO NOT BEGIN WORK UNTIL CONDITIONS HAVE BEEN CORRECTED.
- AFTER INSTALLATION, REPAIR ALL DAMAGES MADE TO EXISTING CONDITIONS TO OHIO UNIVERSITY PROJECT MANAGER'S SATISFACTION.
- PLANT MATERIALS SHALL CONFORM TO THE STANDARDS OF THE AMERICAN ASSOCIATION OF NURSERYMEN AND SHALL HAVE PASSED INSPECTION REQUIRED UNDER STATE REGULATIONS. CALL (202)-789-2900 TO OBTAIN A COPY OF THE AMERICAN STANDARD FOR NURSERY STOCK BOOKLET.
- NURSERY STOCK IDENTIFICATION TAGS SHALL NOT BE REMOVED FROM ANY PLANTING PRIOR TO INSPECTION AND APPROVAL OF INSTALLATION BY THE LANDSCAPE ARCHITECT.
- ALL PLANTINGS TO BE CONTAINED WITHIN HARDWOOD MULCHED BED. ALL TREES LOCATED WITHIN LAWN AREAS TO BE CONTAINED WITH A 5' MULCH RING. HARDWOOD MULCH SHALL BE FINELY SHREDDED HARDWOOD, DARK IN COLOR.
- SEED ALL DISTURBED LAWN AREAS THAT ARE NOT LANDSCAPED.
 - SEED VARIETY TO BE APPROVED BY OHIO UNIVERSITY PROJECT MANAGER.
 - SEEDED LAWNS ARE ACCEPTED BY OHIO UNIVERSITY PROJECT MANAGER AFTER 97% COVERAGE IS ACHIEVED, AND AFTER TWO (2) MOWINGS.
- GENERAL CONTRACTOR IS RESPONSIBLE FOR MAINTAINING POSITIVE DRAINAGE IN LAWN AREAS. LANDSCAPE CONTRACTOR IS RESPONSIBLE FOR PLANT'S LIVABILITY. REFER TO FRONT END SPECIFICATIONS IF APPLICABLE.
- ANY LANDSCAPE CONTRACTOR RECOMMENDED SUBSTITUTIONS MUST BE APPROVED BY THE LANDSCAPE ARCHITECT. UNAPPROVED SUBSTITUTIONS SHALL BE REMOVED AND REPLACED WITH APPROPRIATE PLANTS.
- A COMPLETE LIST OF PLANTS, INCLUDING A SCHEDULE OF SIZES, QUANTITIES, AND OTHER COMMENTS IS SHOWN ON THE DRAWINGS (IF REQUIRED). IN THE EVENT THAT QUANTITY DISCREPANCIES OR MATERIAL OMISSIONS OCCUR IN THE PLANT SCHEDULE, THE PLANTING PLANS SHALL GOVERN.
- GENERAL CONTRACTOR AND SUB-CONTRACTORS ARE RESPONSIBLE FOR COMPLIANCE WITH ALL FEDERAL, STATE AND LOCAL ORDINANCES AND SHALL MAKE CONSULTANTS AWARE OF THESE ORDINANCES.
- GENERAL CONTRACTOR TO COORDINATE CONSTRUCTION STAGING AND MATERIAL STOCKPILING WITH THE OHIO UNIVERSITY PROJECT MANAGER.
- DURING ALL PHASES OF CONSTRUCTION ACTIVITY, IF THE LANDSCAPE CONTRACTOR OR THEIR SUBS ENCOUNTER ANY "SOLID WASTE MATERIAL" (EXCLUDING CLEAN HARD FILL) THE GENERAL CONTRACTOR SHALL BE CONTACTED IMMEDIATELY FOR FURTHER DIRECTION.
- LANDSCAPE CONTRACTOR SHALL CLEAN STREETS OF MUD AND DEBRIS GENERATED BY THEIR CONSTRUCTION ACTIVITIES OR THEIR SUBS' CONSTRUCTION ACTIVITIES, PURSUANT WITH LOCAL CODE REQUIREMENTS.
- LANDSCAPE CONTRACTOR TO COORDINATE WITH THE GENERAL CONTRACTOR TO PROVIDE FOR APPROPRIATE CARE OF EXISTING PLANT MATERIAL AND NEWLY LANDSCAPED AREAS DURING CONSTRUCTION.
- ALL NEWLY PLANTED PLANT MATERIAL SHALL BE WATERED AT THE TIME OF PLACEMENT.

GENERAL NOTES - PLANT MIX

TOPSOIL: FERTILE, FRIABLE NATURAL TOPSOIL OF LOAMY CHARACTER, WITHOUT ADMIXTURE OF SUBSOIL MATERIAL, OBTAINED FROM A WELL-DRAINABLE ARABLE SITE REASONABLY FREE FROM CLAY, LIMPS, COARSE SANDS, 1\"/>

A. IDENTIFY SOURCE LOCATION OF TOPSOIL PROPOSED FOR USE ON THE PROJECT.
B. PROVIDE TOPSOIL FREE OF SUBSTANCES HARMFUL TO THE PLANTS, WHICH WILL BE GROWN IN THE SOIL.

PEAT MOSS: BROWN TO BLACK IN COLOR, WEED AND SEED FREE GRANULATED RAW PEAT OR BALED PEAT, CONTAINING NOT MORE THAN 9% MINERAL ON A DRY BASIS.

MANURE: STERILIZED COW OR DEHYDRATED HORSE MANURE, SHREDDED, WEED AND SEED FREE. FURNISH IN BAGS OR BULK.

BONE MEAL: RAW, FINELY GROUND, COMMERCIAL GRADE, MINIMUM 3% NITROGEN, 20% PHOSPHOROUS.

FERTILIZER: COMMERCIALY APPROVED 12-12-12 (12% NITROGEN, 12% PHOSPHORIC ACID, AND 12% POTASH BY WEIGHT), 1/4 IN THE FORM OF NITRATES; 1/4 IN THE FORM OF AMMONIA SALT, AND 1/2 IN THE FORM OF ORGANIC NITROGEN.

PROVIDE PRE-MIXED PLANTING MIXTURE FOR USE AROUND THE ROOT BALL/ROOTS OF THE PLANTS CONSISTING OF 5 PARTS TOPSOIL, 1 PART PEAT MOSS, 1 PART MANURE, 10 LBS. FERTILIZER (PER CUBIC YARD) AND 2 1/3 LBS. OF BONE MEAL (PER CUBIC YARD).

GENERAL NOTES - TOPSOIL

- TOPSOIL SHALL HAVE THE FOLLOWING CHARACTERISTICS:
- ALL TOPSOIL MUST BE APPROVED BY THE OHIO UNIVERSITY PROJECT MANAGER BEFORE THE INSTALLATION.
 - 3% OR GREATER ORGANIC MATTER CONTENT
 - SHALL BE FREE OF STONES GREATER THAN 1", STICK AND EXTRANEOUS MATERIAL, AND AGGREGATES MUST BE LESS THAN 5% BY VOLUME IN COMPOSITION.
 - MINIMUM SURFACE DEPTH TO BE 4" IN LAWN AREAS, 12" IN PLANTING BEDS
 - GRADE LAWN AREAS TO A SMOOTH, FREE DRAINING, EVEN SURFACE WITH A LOOSE, MODERATELY COARSE TEXTURE. ROLL, SCARIFY, RAKE AND LEVEL AS NECESSARY TO OBTAIN TRUE, EVEN LAWN SURFACES AND FILL DEPRESSIONS AS REQUIRED TO DRAIN. CORRECT IRREGULARITIES IN THE SURFACE RESULTING FROM TILLAGE OPERATIONS TO PREVENT THE FORMATION OF THE DEPRESSIONS OR WATER POCKETS.
 - ONCE TOPSOIL IS PLACED AND FINAL GRADE IS ESTABLISHED, THE OHIO UNIVERSITY PROJECT MANAGER, ALONG WITH A OHIO UNIVERSITY GROUNDS MANAGER, SHALL APPROVE THE FINAL GRADING PRIOR TO SEEDING.
 - BACKFILLING OF TRENCHES SHALL BE DONE IN LIFTS NOT TO EXCEED 6", WITH THE BACKFILL TAMPED AFTER THE PLACEMENT OF EACH LIFT; WHERE APPLICABLE.
 - SUBSURFACE SHALL BE SCARIFIED OR TILLED TO A DEPTH OF 4" IMMEDIATELY PRIOR TO PLACEMENT OF TOPSOIL.
 - REMOVED TOPSOIL THAT IS NOT TO BE REUSED IN THE FINAL GRADING SHALL BE TRANSPORTED TO A STORAGE SITE ON THE OHIO UNIVERSITY GROUNDS AND BECOMES THE PROPERTY OF THE OHIO UNIVERSITY GROUNDS MAINTENANCE DEPARTMENT.
 - ONCE TOPSOIL IS PLACED AND FINAL GRADE IS ESTABLISHED, THE OHIO UNIVERSITY PROJECT MANAGER SHALL APPROVE THE FINAL GRADING PRIOR TO SEEDING.

GENERAL NOTES - SITE MAINTENANCE

- THE CONTRACTOR SHALL BE RESPONSIBLE FOR THE MAINTENANCE OF THE SITE DURING THE CONSTRUCTION PERIOD. THIS INCLUDES RESPONSIBILITY FOR THE FOLLOWING:
- DAILY TRASH CLEANUP, BOTH CONSTRUCTION DEBRIS AND GENERAL LITTER, WHETHER GENERATED AS A RESULT OF THE CONSTRUCTION PROCESS OR NOT.
 - MAINTENANCE OF ALL GROUNDS INSIDE THE CONSTRUCTION FENCE OR BOUNDARIES.
 - MOWING, WATERING AND MAINTENANCE OF THESE GROUNDS SHALL BE KEPT IN A GOOD, SAFE AND ESTHETICALLY PLEASING CONDITION UNTIL THE DATE OF ACCEPTANCE BY THE OHIO UNIVERSITY PROJECT MANAGER. THIS DATE CAN BUT DOES NOT NECESSARILY COINCIDE WITH THE DATE OF SUBSTANTIAL COMPLETION.
 - STREETS AND SIDEWALKS SHALL BE MAINTAINED CLEAN AND FREE OF DEBRIS AND MUD.
 - EROSION CONTROL MEASURES SHALL BE IN PLACE PRIOR TO COMMENCING GROUND DISTURBANCE WORK; WHERE APPLICABLE.
 - CONTRACTOR SHALL SUPPLY ALL BARRICADES, BARRIERS AND TRAFFIC CONTROL DEVICES.

DRAWING NOTES

- EXISTING LAWN (REPAIR ANY LAWN DAMAGED BY DEMOLITION OR CONSTRUCTION)
- PLANT BED EDGE BY HAND OR MACHINE
- MULCH BEDS

PLANT SCHEDULE CLASS GATE

ORNAMENTAL TREES	QTY	BOTANICAL NAME	COMMON NAME	INSTALLATION SIZE	
CPD	6	Cornus florida 'Cherokee Princess'	'Cherokee Princess' Dogwood	2' - 2 1/2' CAL. B&B	
EVERGREEN SHRUBS	QTY	BOTANICAL NAME	COMMON NAME	CONT.	
GMB	2	Buxus x 'Green Mountain'	Green Mountain Boxwood	36"-42" B&B	
GVB	11	Buxus x 'Green Velvet'	Green Velvet Boxwood	18"-21" B&B	
BMH	2	Ilex x meservae 'Mead'	Blue Maid Holly	#7 CONT.	
BOU	10	Rhododendron catawbiense 'Boursault'	Boursault Catawba Rhododendron	#5 CONT.	
CR	20	Rhododendron var. 'Chionoides'	Chionoides Rhododendron	#5 CONT.	
SEASONAL FLOWERS	QTY	BOTANICAL NAME	COMMON NAME	CONT.	SPACING
SFM	250	Seasonal Flowers 'Seasonal Mix'	Assorted Variety Seasonal Mix Annuals	2 1/4" Peat Pots	8" o.c.

**COLLEGE GREEN UPGRADE
CLASS GATE AND TUNNEL
OHIO UNIVERSITY**
ATHENS, OHIO 45701
ATHENS COUNTY, OHIO

Sheet Title
**LANDSCAPE PLAN, NOTES,
DETAILS, AND SCHEDULE**

Project No.	1341200
Scale	1/8" = 1'-0"
Sheet No.	L5.0
File No.	13-412



N:\board projects\13412008-PLA-00-CLASS GATE.dwg, L5.0.LANDSCAPE, 1/17/2015 10:36:53 AM, ghmb, 1:1