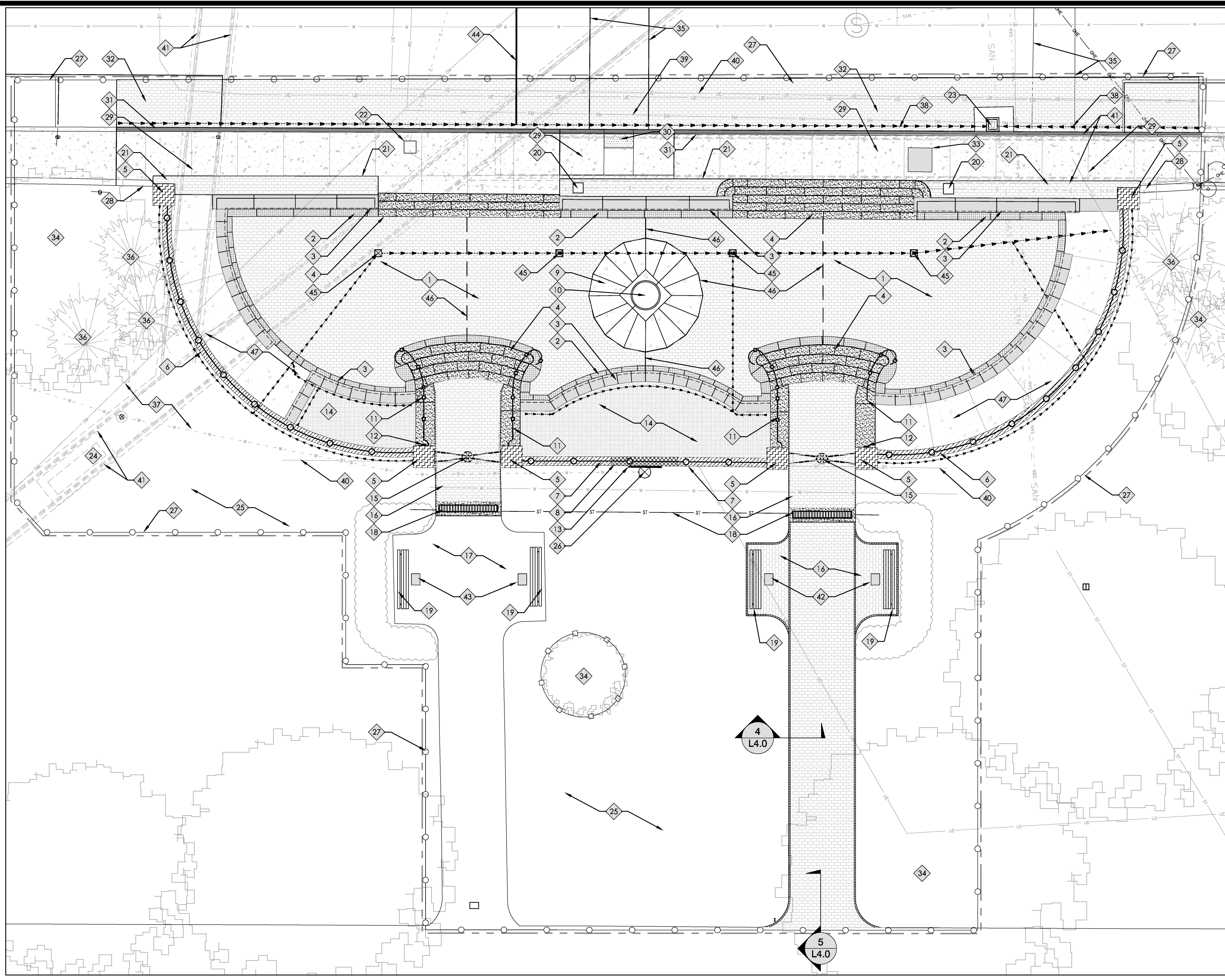


Drawn By	CFB	Project Mgr.	DJF
CAD File	13412006-MP-00-CLASS GATE		
X-Ref File	13412006-BAS-00		
	13412006-BAS-00		
	13412006-TLB-01-CLASS GATE		
Issue/Revision	Revision Number	Date	
BID SET		11/16/15	

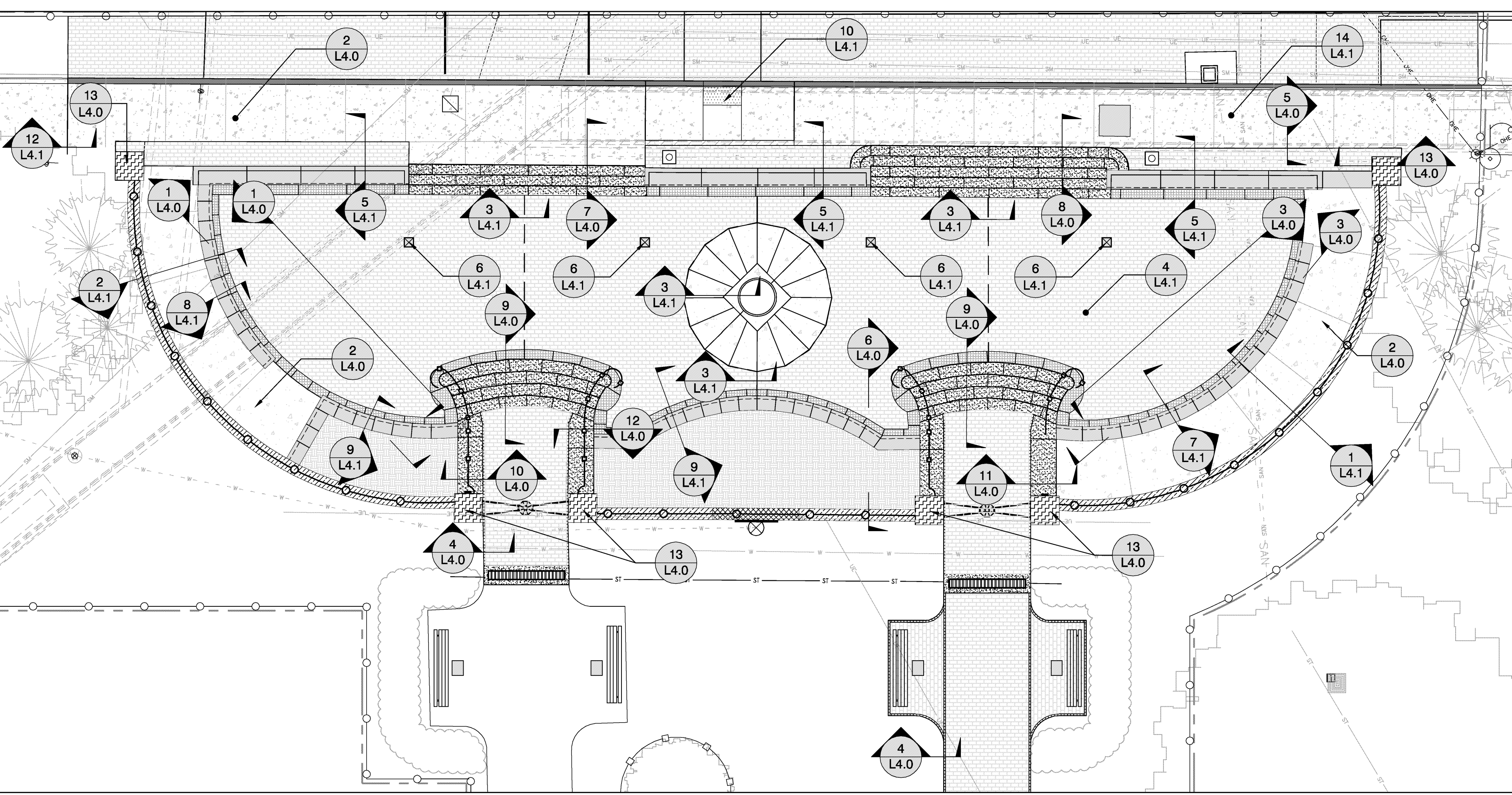
© COPYRIGHT 2015, MCGILL SMITH PUNSHON, INC.



DRAWING NOTES

- 1. BRICK PAVERS - PLAZA LEVEL:
 - REUSE EXISTING STORED PAVERS. PATTERN TO MATCH PREVIOUS PATTERN, EXCEPT AT STEPS TO STREET. PATTERN TO BE THE SAME DIRECTION.
 - SEE ALTERNATE 3 NOTE ON THIS SHEET.
 - SEE DETAILS ON SHEET L4.0.
- 2. LIMESTONE BANDING:
 - SEE DETAILS ON SHEET L4.1.
- 3. SEAT WALL:
 - LIMESTONE CAP WITH BRICK FACE. LIMESTONE TO MATCH PREVIOUS SIZES, SHAPES AND FINISH.
 - PROVIDE A WATERPROOF ON ALL LIMESTONE CAPS.
 - SEE DETAILS ON SHEET L4.0 AND L4.1.
- 4. LIMESTONE STEPS:
 - LIMESTONE TO MATCH PREVIOUS FINISH.
 - SEE GRADING PLAN FOR ADDITIONAL INFORMATION.
 - PROVIDE A WATERPROOF ON ALL LIMESTONE STEPS.
 - SEE DETAILS ON SHEET L4.0.
- 5. COLUMNS:
 - LIMESTONE CAPS WITH BRICK FACE. REUSE EXISTING STORED LIMESTONE CAPS. REPAIR AND CLEAN PRIOR TO INSTALLING.
 - SEE DETAILS ON SHEET L4.0 AND L4.1.
- 6. WALL WITH WROUGHT IRON FENCE:
 - CONCRETE WALL WITH BRICK FACE (FACING PLAZA ONLY), LIMESTONE CAP (MATCH EXISTING PROFILE) AND REFINISHED WROUGHT IRON FENCE. REFINISHING INCLUDES BUT NOT LIMITED TO: BURNING OFF LEAD PAINT, IRON REPAIRS, DIP EPOXY PRIMER WITH TWO (2) COATS OF BLACK POWDER PAINT.
 - SEE DETAILS ON SHEET L4.0 AND L4.1.
- 7. WALL WITH WROUGHT IRON FENCE:
 - LIMESTONE CAP AND REFINISHED WROUGHT IRON FENCE PLACED ON EXISTING WALL.
 - CLEAN AND SEAL EXISTING WALL WITH A WATERPROOF.
 - REFINISHING INCLUDES BUT NOT LIMITED TO: BURNING OFF LEAD PAINT, IRON REPAIRS, DIP EPOXY PRIMER WITH TWO (2) COATS OF BLACK POWDER PAINT.
 - HOLES WHERE WROUGHT IRON FENCE WAS LOCATED TO BE FILLED WITH NON-SHRINKING GROUT UNLESS REFINISHED WROUGHT IRON FENCE WILL REUSE EXISTING HOLES.
 - SEE DETAILS ON SHEET L4.0.
- 8. LIMESTONE WALL WITH WROUGHT IRON FENCE:
 - CLEAN ALL SIDES AND TOP OF EXISTING LIMESTONE WALL PRIOR TO PLACING REFINISHED WROUGHT IRON FENCE.
 - REFINISHING INCLUDES BUT NOT LIMITED TO: BURNING OFF LEAD PAINT, IRON REPAIRS, DIP EPOXY PRIMER WITH TWO (2) COATS OF BLACK POWDER PAINT.
 - VERBIAGE ON NORTH FACE SHALL BE REPAINTED BLACK PRIOR TO APPLYING SEALANT.
 - HOLES WHERE WROUGHT IRON FENCE WAS LOCATED TO BE FILLED WITH NON-SHRINKING GROUT UNLESS REFINISHED WROUGHT IRON FENCE WILL REUSE EXISTING HOLES.
 - SEE DETAILS ON SHEET L4.0.
- 9. LIMESTONE MEDALLION:
 - SET LIMESTONE MEDALLION PIECES PER GRADING PLAN.
- 10. COMPASS:
 - PROVIDE A PERMANENT BOND AND SET COMPASS FLUSH WITH ADJOINING LIMESTONE MEDALLION.
 - CLEAN COMPASS PRIOR TO PLACING.
- 11. WROUGHT IRON HAND RAIL:
 - USE EXISTING WROUGHT IRON AS TEMPLATE FOR LAMBS TONGUE AND OTHER DETAILING FOR NEW WROUGHT IRON HAND RAIL PRIOR TO TURNING OVER TO UNIVERSITY.
 - WROUGHT IRON HAND RAIL TO HAVE SAME FINISH PAINT (BLACK) AS WROUGHT IRON FENCE.
 - ALL WELD JOINTS SHALL BE Sanded AND DIPPED WITH EPOXY PRIMER PRIOR TO PAINT.
 - SEE DETAILS ON SHEET L4.0. PROVIDE SHOP DRAWINGS.
- 12. PLAQUE:
 - RESET EXISTING PLAQUE ON BRICK COLUMN. MAINTAIN HEIGHT AND CONNECT PER PREVIOUS INSTALLATION.
 - CLEAN PLAQUE PRIOR TO PLACING.
 - EAST PLAQUE IS FROM THE CLASS OF 1949 AND THE WEST PLAQUE IS FROM THE CLASS OF 1912.
- 13. PLAQUE:
 - CLEAN PLAQUE PRIOR TO CLEANING AND SEALING LIMESTONE.
- 14. PLANTING BED TOPSOIL/PLANT MIX:
 - REUSE/PLACE EXISTING TOPSOIL/PLANT MIX.
 - PROVIDE ADDITIONAL TOPSOIL/PLANT MIX AS NEEDED SO FINISHED GRADE IS WITHIN FOUR (4) INCHES FROM TOP OF LIMESTONE CAP.
 - LIGHTLY COMPACT TOPSOIL/PLANT MIX TO PREVENT SETTLING. MULCH ALL PLANTING BEDS WITH TWO (2) TO THREE (3) INCHES OF MULCH AFTER PLANTING.
- 15. WROUGHT IRON LIGHT FIXTURE AND SUPPORTS:
 - REFINISH FIXTURE AND MOUNT PER PREVIOUS INSTALLATION. REFINISHING INCLUDES BUT NOT LIMITED TO: BURNING OFF LEAD PAINT, IRON REPAIRS, DIP EPOXY PRIMER WITH TWO (2) COATS OF BLACK POWDER PAINT. CLEAN OR REPLACE GLASS PANELS.
 - SEE ALTERNATE 1 NOTE ON THIS SHEET.
 - CONNECT ALL EXISTING OR NEW ELECTRICAL CONNECTIONS AS REQUIRED/NEEDED BASED ON FIELD OBSERVATION BY ELECTRICAL INSPECTOR.
- 16. BRICK PAVERS - GREEN LEVEL:
 - REUSE EXISTING STORED PAVERS. PATTERN TO MATCH PREVIOUS PATTERN.
 - SEE ALTERNATE 2 NOTE ON THIS SHEET.
 - SEE DETAILS ON SHEET L4.0.
- 17. BRICK PAVERS - GREEN LEVEL:
 - EXISTING BRICK PAVERS TO REMAIN UNDISTURBED EXCEPT WHERE PROPOSED BENCH PLAQUES WILL BE INSTALLED AND WHERE BENCH POSTS WERE LOCATED. IF BRICK PAVERS ARE REMOVED FOR BENCH REMOVAL, RESET BRICK PAVERS TO MATCH EXISTING GRADES.
- 18. TRENCH DRAINS & PIPE:
 - RESET EXISTING TRENCH DRAINS WITH A SIX (6) INCH CONCRETE COLLAR AROUND ALL EXPOSED EDGES.
 - LIGHT BROOM FINISH PERPENDICULAR TO PEDESTRIAN TRAFFIC FLOW.
 - PROVIDE HALF (1/2") INCH EXPANSION JOINT BETWEEN CONCRETE AND BRICK PAVERS.
 - THE TRENCH DRAINS INTO EXISTING DRAINAGE SYSTEM ON THE OUTSIDE OF EACH SIDEWALK. ADD SCH. 30 PIPE (MATCH EXISTING PIPE SIZE) BETWEEN SIDEWALKS.
- 19. BENCH:
 - EIGHT (8) FOOT LONG BENCH WITH BACK.
- 20. TRAFFIC POLE/LIGHT:
 - PROTECT DURING CONSTRUCTION.
 - SEE TRAFFIC CONTROL NOTES ON SHEET L2.0.
- 21. BRICK PAVERS - STREET LEVEL:
 - USE PAVERS FROM PREVIOUS OHIO UNIVERSITY PROJECT #14-042P. APPROVED EQUAL OR FROM WALKWAY BRICK PAVERS (PLAZA TO GREEN) IF NOT ALREADY REUSING THEM.
- 22. ELECTRICAL BOX:
 - RELOCATE & RESET BOX TO NEW SIDEWALK ELEVATION.
- 23. CATCH BASIN WITH CONCRETE COLLAR/STRUCTURE:
 - CONNECT PROPOSED 6" DRAIN TILE THROUGH SIDEWALK OF STRUCTURE.
- 24. STEAM PIPE AND TUNNEL VENT:
 - SEE STRUCTURAL DRAWINGS.
- 25. LAWN AREA:
 - USE AS STAGING AREA DURING CONSTRUCTION. REPAIR DAMAGED AREAS AFTER CONSTRUCTION.
 - DO NOT STORE MATERIALS WHERE STORM DRAIN CONNECTIONS TAKE PLACE OR UNDER DRIPLINE OF TREE CANOPIES.
- 26. WATER METER/WATERLINE:
 - REMAIN UNDISTURBED AND PROTECT FROM DAMAGE DURING CONSTRUCTION.
- 27. TEMPORARY CHAINLINK CONSTRUCTION FENCE:
 - 8-FT. HIGH FENCE
 - SEE TRAFFIC CONTROL NOTES ON SHEET L2.0.
 - PROVIDE WINDSCREEN ON FENCE
 - FENCE MAY BE TAKEN DOWN IN ORDER TO PERFORM WORK BUT NEEDS TO BE RESET PRIOR TO THE END OF THE WORKING DAY.
 - FENCE NEEDS TO REMAIN UNTIL SUBSTANTIAL COMPLETION OR AS DIRECTED BY THE OHIO UNIVERSITY PROJECT MANAGER.
- 28. STONE WALL:
 - REPLACE PORTIONS OF WALL DISTURBED DURING DEMOLITION. REPAIR STONE AND MATCH EXISTING CRAFTSMANSHIP AND MORTAR COLOR.
- 29. CONCRETE SIDEWALK/TUNNEL LID:
 - CURB TO MATCH EXISTING PROFILE.
 - PROVIDE 1/2" INCH EXPANSION JOINTS BETWEEN CONCRETE AND CURB, ADA RAMP, STEPS AND EXISTING CONCRETE.
 - SEE CONCRETE SIDEWALK DETAIL ON SHEET L4.0
 - SEE STRUCTURAL DRAWINGS FOR TUNNEL LID BELOW SIDEWALK.
- 30. PARALLEL CURB/RAMP WITH TRUNCATED DOMES:
 - SEE DETAIL ON SHEET L4.1.
- 31. CONCRETE CURB:
 - CURB TO MATCH EXISTING PROFILE.
 - PAINT YELLOW TO MATCH CITY OF OXFORD STANDARDS.
 - SEE STRUCTURAL DETAILS FOR CURB AT TUNNEL WALL.
- 32. BRICK PAVERS - STREET LEVEL:
 - REUSE/RESET BASE AND PAVERS.
 - SEE GRADING PLAN SHEET 3.1.
- 33. TUNNEL ACCESS LID:
 - SEE STRUCTURAL DRAWINGS.
- 34. PLANT MATERIAL:
 - REMAIN UNDISTURBED AND PROTECTED FROM DAMAGE DURING CONSTRUCTION.
- 35. RE-STRIPPE CROSSWALK:
 - MATCH EXISTING STYLE; PAINT WHITE TO MATCH CITY OF OXFORD STANDARDS.
- 36. PLANT MATERIAL:
 - EXISTING HOLLY; PROTECT FROM DAMAGE DURING CONSTRUCTION.
- 37. EARTH:
 - REPLACE IF MATERIAL IS ACCEPTABLE FOR BACKFILL / LANDSCAPE US OR DISPOSE OF PROPERTY AFTER TUNNEL TOP REPLACEMENT.
 - COMPACT AS NECESSARY TO PREVENT SETTLING.
 - SEED/STRAW/MULCH PER LANDSCAPE PLANS.
- 38. DRAIN TILE:
 - 6" PERFORATED PIPE. SEE DETAILS ON SHEET L4.1.
- 39. STORM PIPE:
 - REMAIN UNDISTURBED AND PROTECTED DURING CONSTRUCTION.
- 40. ELECTRIC LINE:
 - REMAIN UNDISTURBED AND PROTECTED DURING CONSTRUCTION.
- 41. TUNNEL LIMITS:
 - EXTENT OF TUNNEL WALLS BELOW SURFACE; SEE STRUCTURAL DRAWINGS.
- 42. PLAQUE:
 - PROPOSED LIMESTONE PLAQUE TO MATCH EXISTING PLAQUE SIZE AND TEXT STYLE AS FOUND ON PLAQUE AT CENTRAL WALKWAY NODE. PLAQUE TEXT TO READ CLASS OF 1976.
- 43. PLAQUE:
 - PROPOSED LIMESTONE PLAQUE TO MATCH EXISTING PLAQUE SIZE AND TEXT STYLE AS FOUND ON PLAQUE AT CENTRAL WALKWAY NODE. PLAQUE TEXT TO READ CLASS OF 1980.
- 44. STOP BAR & CENTER LINES:
 - RELOCATED STOP BAR - PAINT THICKNESS TO MATCH CITY OF ATHENS STANDARDS
 - EXTEND CENTERLINE PAINT MARKING TO STOP BAR (NOT SHOWN)
- 45. DRAIN INLET:
 - PROPOSED TWELVE (12) INCH SQUARE DRAIN PLATE WITH ADA COMPLIANT BLACK CAST IRON GRATE AND ADS N-12 PIPE.
 - SEE DETAILS ON SHEET L4.1
- 46. EXPANSION JOINT IN PAVEMENT BASE CONCRETE:
 - EXPANSION JOINT SHOWN FOR HORIZONTAL CHANGES ONLY. SEE GENERAL NOTE 15 ON THIS SHEET FOR ADDITIONAL INFORMATION.
 - SEE DETAILS ON SHEET L4.1
- 47. CONCRETE PAVEMENT/SLOPED SIDEWALK:
 - LIGHT BROOM FINISH PERPENDICULAR TO PEDESTRIAN TRAFFIC FLOW.
 - PROVIDE HALF (1/2") INCH EXPANSION JOINT BETWEEN CONCRETE AND WALLS, LIMESTONE, AND BRICK PAVERS.
 - SEE DETAILS ON SHEET L4.0 & L4.1

LAYOUT PLAN: CODED NOTES
 SCALE: 1/8" = 1'-0"



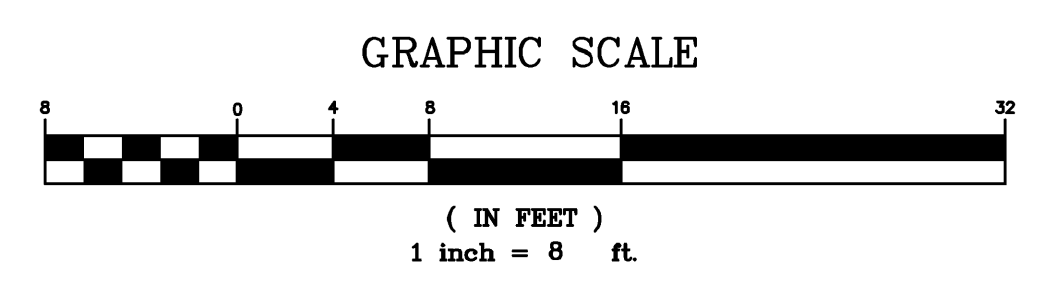
LAYOUT PLAN: SECTIONS & DETAILS
 SCALE: 1/8" = 1'-0"

GENERAL NOTES

- 1. ALL DIMENSIONS SHOWN USING CURBS, WALLS OR PAVEMENT AS A REFERENCE POINT ARE FROM FACE OF CURB, FINISHED FACE OF WALLS OR PAVEMENT EDGE, UNLESS OTHERWISE NOTED. CONTRACTOR SHALL NOTIFY OHIO UNIVERSITY PROJECT MANAGER AND LANDSCAPE ARCHITECT IF A DISCREPANCY IS FOUND BETWEEN THE DIMENSION GIVEN AND ACTUAL FIELD DIMENSIONS.
- 2. ALL WORK SHALL COMPLY WITH LOCAL AND STATE CODES, STANDARDS OF CONSTRUCTION AND OHIO UNIVERSITY STANDARDS.
- 3. THE CONTRACTOR IS RESPONSIBLE FOR EXAMINING ALL SITE CONDITIONS PRIOR TO START OF CONSTRUCTION.
- 4. CONTRACTOR SHALL VERIFY ALL DIMENSIONS AND ELEVATIONS PRIOR TO START OF THE WORK AND BRING ANY DISCREPANCIES TO THE ATTENTION OF THE LANDSCAPE ARCHITECT AND OHIO UNIVERSITY PROJECT MANAGER FOR RESOLUTION. PLANS INDICATE APPROXIMATE ELEVATIONS AND ROUTING.
- 5. DETAILS AND SPECIFICATIONS SHOWN ON THESE PLANS ARE INTENDED TO COMPLEMENT THE PROJECT PLANS AND STANDARD DETAILS. IN CASE OF CONFLICT BETWEEN THESE PLANS AND OTHER SPECIFICATIONS, THE MORE RESTRICTIVE CASE APPLIES, UNLESS SPECIFICALLY OVERRIDDEN.
- 6. CONTRACTOR SHALL REPAIR, RESURFACE, RECONSTRUCT OR REFINISH ANY AREAS DAMAGED DURING CONSTRUCTION BY THE CONTRACTOR, HIS SUBCONTRACTORS OR SUPPLIERS AT NO ADDITIONAL COST TO THE UNIVERSITY.
- 7. THE AREAS DISTURBED DURING DEMOLITION AND CONSTRUCTION THAT REQUIRE GRADING AND SEED WORK SHALL BE FINE GRADED AND SEED/FERTILIZED AND STRAWED.
- 8. ADHERE TO ACI STANDARDS FOR SIDEWALK CONTROL/ISOLATION JOINTS.
- 9. CONTRACTOR SHALL MAINTAIN POSITIVE DRAINAGE ACROSS PROPOSED BRICK PAVERS.
- 10. CONTRACTOR SHALL MAINTAIN ADA ACCESS ACROSS SIDEWALK AT CENTER NODE. TEMPORARY ACCESS WILL BE REQUIRED DURING ALL PHASES OF CONSTRUCTION.
- 11. CONTRACTOR SHALL PROVIDE TEMPORARY BARRIERS AND SIGNS TO KEEP PUBLIC OUT OF THE LIMITS OF CONSTRUCTION.
- 12. FINAL SURFACES SHOULD BE ANTICIPATED TO INSURE THAT POSITIVE AREA DRAINAGE OCCURS.
- 13. THE USE OF MASONRY CLEANERS SHALL NOT BE SCHEDULED WITHOUT PRIOR APPROVAL BY THE PROJECT MANAGER.
- 14. VERIFY LOCATIONS OF SIDEWALK CONTROL AND OR EXPANSION JOINTS IN FIELD.
- 15. PROVIDE EXPANSION JOINT IN CONCRETE SLAB (PAVER BASE) AROUND ALL VERTICAL FACES AROUND CONCRETE SLAB FOR LIMESTONE MEDALLION AND AT SEPARATE CONCRETE POURS - INSTALL SLIP RODS PER DETAIL.
- 16. DAMPROOF ALL UNEXPOSED SURFACES OF LIMESTONE UP TO ONE (1) FOOT ABOVE GRADE (INCLUDING ALL JOINTS) WITH A CEMENTITIOUS WATERPROOF OF STONE BACKING OR BITUMINOUS BACKING. DAMPROOFING SHALL BE APPLIED IN THE FIELD.
- 17. WATERPROOF SHALL BE APPLIED ON ALL LIMESTONE AND FACE BRICK.

ALTERNATE NOTES

- ALTERNATE 1: REPLACE EXISTING LIGHT SOURCE WITH LED LIGHT SOURCE FOR TWO LIGHTS ALONG WITH ELECTRICAL CONNECTIONS.
- ALTERNATE 2: PROVIDE NEW BRICK PAVERS FOR EAST WALKWAY FROM PLAZA STEPS TO GREEN AND AT STREET LEVEL.
- ALTERNATE 3: PROVIDE NEW BRICK PAVERS FOR PLAZA LEVEL.



OHIO
 Utilities Protection
 SERVICE
Call Before You Dig
 1-800-362-2764
CALL TWO WORKING DAYS BEFORE YOU DIG
 (NON-MEMBERS MUST BE CALLED DIRECTLY)

**COLLEGE GREEN UPGRADE
 CLASS GATE AND TUNNEL
 OHIO UNIVERSITY**
 ATHENS, OHIO 45701
 ATHENS COUNTY, OHIO

Sheet Title	LAYOUT PLAN
Project No.	13412.00
Scale	AS NOTED
Sheet No.	L3.0
File No.	13-412

N:\board\projects\13000\13412\dwg\13412006-MP-00-CLASS GATE.dwg, 13412006-MP-00-CLASS GATE.dwg, 11/17/2015 10:29:57 AM, c:\hso, 1:1