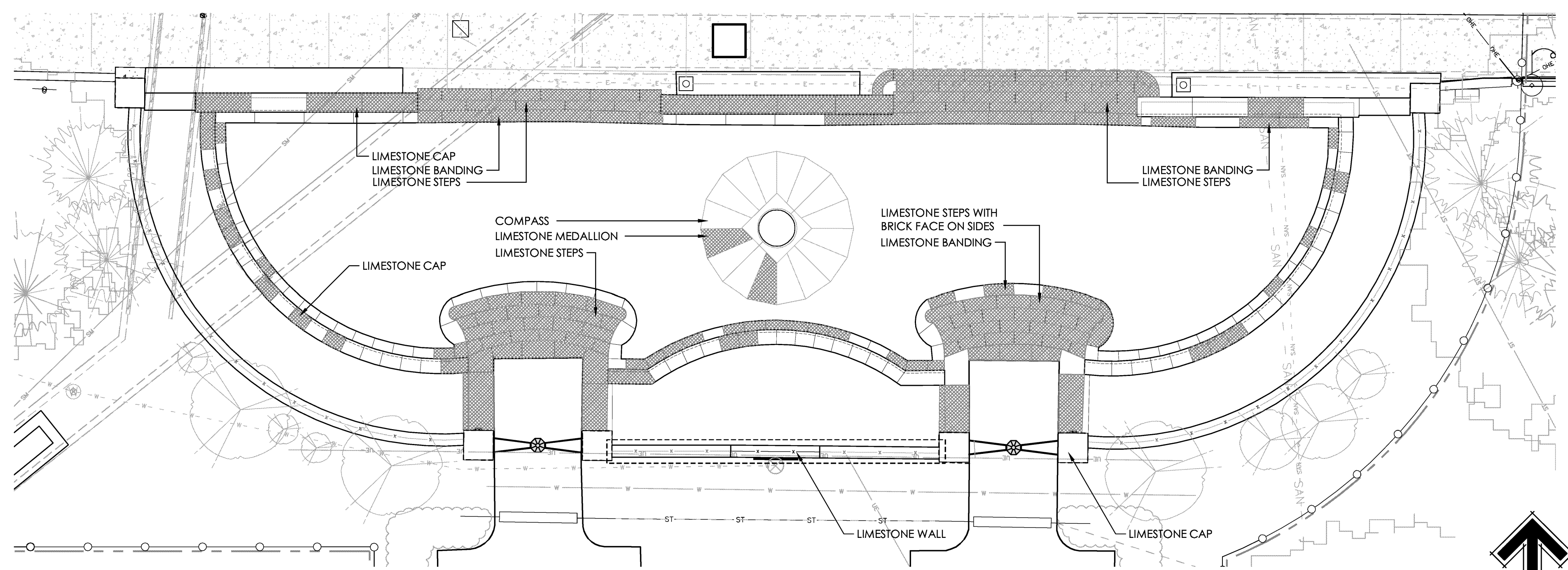


DEMOLITION PLAN

SCALE: 1/8" = 1'-0"

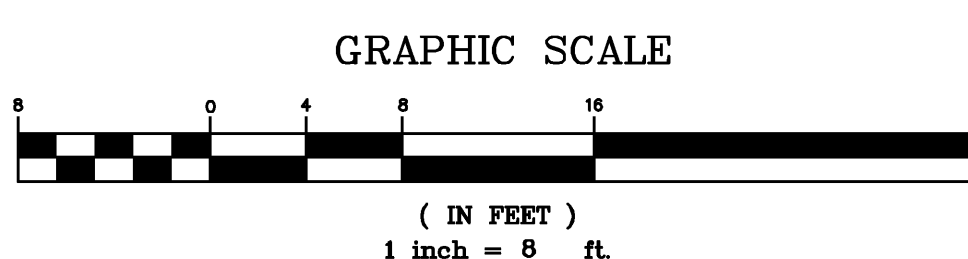


DEMOLITION PLAN - DAMAGED ITEMS

SCALE: 1/8" = 1'-0"

LEGEND - DAMAGED ITEMS

INDIVIDUAL PIECES THAT ARE DAMAGED



DRAWING NOTES

- ◆ BRICK PAVERS - PLAZA LEVEL:
 - REMOVE AND STORE UNTIL NEEDED. PROTECT FROM DAMAGE DURING STORAGE. SEE ALTERNATE NOTE ON SHEET L3.0.
 - REMOVE STONE BASE MATERIAL. STORE UNTIL NEEDED OR DISPOSE OF PROPERLY.
 - REMOVE CONCRETE BASE FROM UNDER BANK RUN AND DISPOSE OF PROPERLY.
- ◆ LIMESTONE BANDING:
 - REMOVE UNDAAMAGED AND DAMAGED PIECES AND TURN OVER TO UNIVERSITY.
- ◆ SEAT WALL:
 - REMOVE LIMESTONE CAPS - UNDAAMAGED AND DAMAGED CAPS SHALL BE TURNED OVER TO UNIVERSITY.
 - REMOVE BRICK FACE, FOUNDATION WALL AND FOOTING AND DISPOSE OF PROPERLY.
- ◆ LIMESTONE STEPS:
 - REMOVE UNDAAMAGED AND DAMAGED PIECES AND TURN OVER TO UNIVERSITY.
 - REMOVE BRICK FACE ON SIDES OF STEPS (PLAZA TO GREEN LEVEL). FOUNDATIONS UNDER ALL LIMESTONE STEPS AND DISPOSE OF PROPERLY.
- ◆ COLUMNS:
 - REMOVE BRICK FACE, FOUNDATION WALL AND FOOTING AND DISPOSE OF PROPERLY.
 - REMOVE LIMESTONE CAPS AND STORE UNTIL NEEDED. PROTECT FROM DAMAGE DURING STORAGE.
- ◆ WALL WITH WROUGHT IRON FENCE:
 - REMOVE WALL CAP, BRICK FACE, FOUNDATION WALL AND FOOTING AND DISPOSE OF PROPERLY.
 - REMOVE WROUGHT IRON FENCE AND STORE UNTIL NEEDED. PROTECT FROM DAMAGE DURING STORAGE. SEE SHEET L3.0 FOR ADDITIONAL INFORMATION.
- ◆ WALL WITH WROUGHT IRON FENCE:
 - REMOVE WALL CAP AND DISPOSE OF PROPERLY.
 - BRICK FACE, FOUNDATION WALL AND FOOTING TO REMAIN UNDISTURBED. PROTECT FROM DAMAGE DURING DEMOLITION.
 - REMOVE WROUGHT IRON FENCE AND STORE UNTIL NEEDED. SEE SHEET L3.0 FOR ADDITIONAL INFORMATION.
- ◆ LIMESTONE WALL WITH WROUGHT IRON FENCE:
 - WALL TO REMAIN UNDISTURBED. PROTECT FROM DAMAGE DURING DEMOLITION. SEE SHEET L3.0 FOR ADDITIONAL INFORMATION.
 - REMOVE WROUGHT IRON FENCE AND STORE UNTIL NEEDED. PROTECT FROM DAMAGE DURING STORAGE. SEE SHEET L3.0 FOR ADDITIONAL INFORMATION.
- ◆ LIMESTONE MEDALLION:
 - REMOVE UNDAAMAGED AND DAMAGED PIECES AND TURN OVER TO UNIVERSITY.
- ◆ COMPASS:
 - REMOVE AND STORE UNTIL NEEDED. PROTECT FROM DAMAGE DURING STORAGE. SEE SHEET L3.0 FOR ADDITIONAL INFORMATION.
- ◆ WROUGHT IRON HAND RAIL:
 - REMOVE AND TURN OVER TO UNIVERSITY. SEE SHEET L3.0 FOR ADDITIONAL INFORMATION. DO NOT SAW CUT POST OR RAILS.
- ◆ PLAQUE:
 - REMOVE AND STORE UNTIL NEEDED. PROTECT FROM DAMAGE DURING STORAGE. SEE SHEET L3.0 FOR ADDITIONAL INFORMATION.
- ◆ PLAQUE:
 - REMAIN UNDISTURBED AND PROTECT FROM DAMAGE DURING DEMOLITION. SEE SHEET L3.0 FOR ADDITIONAL INFORMATION.
- ◆ PLANTING BED TOPSOIL/PLANT MIX:
 - REMOVE AND STORE UNTIL NEEDED. PROTECT FROM WEATHER DURING STORAGE. SEE SHEET L3.0 FOR ADDITIONAL INFORMATION.
- ◆ WROUGHT IRON LIGHT FIXTURE AND SUPPORTS:
 - REMOVE AND STORE UNTIL NEEDED. PROTECT FROM DAMAGE DURING STORAGE. SEE SHEET L3.0 FOR ADDITIONAL INFORMATION.
 - DISCONNECT ELECTRIC AND CAP OFF AS REQUIRED PRIOR TO REMOVING FIXTURE.
- ◆ BRICK PAVERS - GREEN LEVEL:
 - REMOVE AND STORE UNTIL NEEDED. PROTECT FROM DAMAGE DURING STORAGE. KEEP SEPARATE FROM PLAZA BRICK PAVERS. SEE SHEET L3.0 FOR ADDITIONAL INFORMATION.
- ◆ BRICK PAVERS - GREEN LEVEL:
 - WALKWAY MAY BE USED FOR STAGING MATERIAL BUT MUST BE PROTECTED DURING DEMOLITION. REPAIR ANY DAMAGED PAVERS AFTER CONSTRUCTION.
- ◆ TRENCH DRAINS & PIPE:
 - REMOVE AND STORE TRENCH DRAIN COVERS UNTIL NEEDED. PROTECT FROM DAMAGE DURING STORAGE. SEE SHEET L3.0 FOR ADDITIONAL INFORMATION.
 - REMOVE CONCRETE COLLAR FROM AROUND DRAINS AND PIPE BETWEEN SIDEWALKS. AND DISPOSE OF PROPERLY.
- ◆ WOOD BENCH:
 - REMOVE BENCH AND EMBEDDED PORTION OF BENCH TO UNIVERSITY. DO NOT CUT OFF POST WHEN REMOVING.
- ◆ TRAFFIC POLE/LIGHT:
 - PROTECT DURING DEMOLITION. IF REMOVED, STORE AND PROTECT.
 - SEE TRAFFIC CONTROL NOTES ON THIS SHEET.
- ◆ CONCRETE SIDEWALK:
 - SAW CUT. REMOVE AND DISPOSE OF PROPERLY. ALIGN CUTS WITH EDGE OF COLUMN BASE AND EDGE OF PAVERS.
- ◆ ELECTRIC JUNCTION BOX:
 - REMOVE LID AND STORE FOR FUTURE USE; REMOVE CONCRETE BOX AND DISPOSE OF PROPERLY.
- ◆ CATCH BASIN WITH CONCRETE COLLAR/STRUCTURE:
 - LEAVE COLLAR/STRUCTURE IN PLACE.
 - CORE DRILL WEST SIDE OF STRUCTURE FOR PROPOSED 6" PIPE.
- ◆ STEAM PIPE AND TUNNEL VENT:
 - SEE STRUCTURAL DRAWINGS.
- ◆ LAWN AREA:
 - USE AS STAGING AREA DURING DEMOLITION; REPAIR DAMAGED AREAS AFTER CONSTRUCTION.
 - DO NOT STORE MATERIAL UNDER DRIPLINE OF TREE CANOPIES.
- ◆ WATER METER/WATER LINE:
 - REMAIN UNDISTURBED AND PROTECT FROM DAMAGE DURING DEMOLITION.
- ◆ TEMPORARY CHAINLINK CONSTRUCTION FENCE:
 - 8-FT. HIGH FENCE WITH MID, TOP, AND BOTTOM RAILS WITH APPROPRIATE ANCHORING.
 - SEE TRAFFIC CONTROL NOTES ON THIS SHEET.
 - PROVIDE PRIVACY SCREEN ON FENCE.
- ◆ WALL:
 - REMOVE PORTION OF WALL AND STORE UNTIL NEEDED. PROTECT FROM DAMAGE DURING STORAGE.
 - PROTECT REMAINING WALL AND GRADE.
 - DO NOT SAW CUT WALL VERTICALLY.
 - SEE STRUCTURAL DRAWINGS FOR TUNNEL TOP REPLACEMENT WORK IN THE VICINITY.
- ◆ CONCRETE SIDEWALK/TUNNEL LID:
 - SEE STRUCTURAL DRAWINGS FOR CONCRETE OVER TUNNEL.
- ◆ STREET LEVEL BRICK PAVERS:
 - REMOVE AND STORE UNTIL NEEDED. PROTECT FROM DAMAGE DURING STORAGE.
 - SEE ALTERNATE NOTE ON L3.0.
 - REMOVE STONE BASE MATERIAL. STORE UNTIL NEEDED OR DISPOSE OF PROPERLY.
- ◆ CONCRETE CURB:
 - REMOVE CONCRETE CURB AND DISPOSE OF PROPERLY.
- ◆ BRICK PAVERS - STREET:
 - REMOVE AND STORE UNTIL NEEDED. PROTECT FROM DAMAGE DURING STORAGE.
- ◆ TUNNEL ACCESS LID:
 - REMOVE ACCESS LID; STORE AND PROTECT FOR FUTURE USE.
- ◆ PLANT MATERIAL:
 - REMAIN UNDISTURBED AND PROTECT FROM DAMAGE DURING DEMOLITION.
 - SEE DEMOLITION NOTES ON THIS SHEET.
- ◆ PLANT MATERIAL:
 - REMOVE PLANT MATERIAL (INCLUDING ROOTS) AND DISPOSE OF PROPERLY.
- ◆ PLANT MATERIAL:
 - EXISTING HOLLY. SEE ROOT PRUNING NOTES WITHIN DEMOLITION NOTES ON THIS SHEET.
- ◆ EARTH:
 - EXCAVATE AS NEEDED FOR TUNNEL WORK. SEE STRUCTURAL DRAWINGS.
 - STOCKPILE MATERIAL AND REUSE IF ACCEPTABLE OR DISPOSE OF PROPERLY.
- ◆ POST:
 - REMOVE POST AND TURN OVER TO UNIVERSITY OR DISPOSE OF PROPERLY.
- ◆ STORM PIPE:
 - REMAIN UNDISTURBED AND PROTECTED FROM DAMAGE DURING DEMOLITION.
 - SEE STRUCTURAL DRAWINGS.
- ◆ ELECTRICAL LINE:
 - REMAIN UNDISTURBED AND PROTECT FROM DAMAGE DURING DEMOLITION.
- ◆ TUNNEL EXTENTS:
 - LIMITS OF TUNNEL WALLS BELOW SURFACE; SEE STRUCTURAL DRAWINGS.
- ◆ CONCRETE BASE/TRAFFIC POLE:
 - REMAIN UNDISTURBED AND PROTECT FROM DAMAGE DURING DEMOLITION.
 - PROVIDE TEMPORARY SHORING, IF NEEDED.
- ◆ EXISTING PAINTED CROSSWALK:
 - REMOVE STRIPING ACROSS E. UNION STREET TO CURB.
 - REMOVE STRIPING PRIOR TO REMOVING PAVERS, WHERE APPLICABLE.
- ◆ EXISTING PAINTED STOP BAR:
 - REMOVE STOP BAR LINE ACROSS E. UNION TO CENTERLINE.
 - REMOVE STOP BAR LINE PRIOR TO REMOVING PAVERS, WHERE APPLICABLE.

DEMOLITION NOTES

1. ALL ITEMS TO BE SALVAGED SHALL BE MOVED BY CONTRACTOR AND COORDINATED WITH THE OHIO UNIVERSITY PROJECT MANAGER. LOCATIONS AND/OR REUSE OF SALVAGED ITEMS WILL BE AT THE OHIO UNIVERSITY PROJECT MANAGER'S DISCRETION.
 - 1.1. ALL EXISTING MATERIALS THAT UNIVERSITY WISHES TO KEEP SHALL BE PLACED ON PALLETS AND DELIVERED TO LOT #1 OFF WEST STATE STREET.
 - 1.2. MATERIALS SHALL BE STACKED NEATLY AT LOT #1, 336 STATE STREET.
2. IT SHALL BE THE RESPONSIBILITY OF THE CONTRACTOR TO REMOVE ANY CONCRETE FOUNDATIONS AND/OR OTHER DEBRIS DISCOVERED DURING EXCAVATION AND RE-GRADING.
3. IT SHALL BE THE RESPONSIBILITY OF THE CONTRACTOR TO REMOVE ANY VEGETATION AND/OR TOP SOIL TO CREATE A CLEAR HAUL PATH. THE CONTRACTOR SHALL MAINTAIN ACCESSIBILITY FOR EARTH MOVING VEHICLES.
4. CONTRACTOR IS TO VERIFY LOCATIONS OF ALL UTILITIES WITH THE OHIO UNIVERSITY PROJECT MANAGER AND UTILITY COMPANIES PRIOR TO BEGINNING CONSTRUCTION. CONTRACTOR IS RESPONSIBLE FOR DETERMINING IN THE FIELD ACTUAL LOCATIONS AND ELEVATIONS OF EXISTING UTILITIES. WHETHER INDICATED ON PLANS OR NOT. CONTRACTOR MUST CALL THE UTILITIES PROTECTION SERVICE A MINIMUM OF 48 HOURS PRIOR TO CONSTRUCTION. CONTRACTOR SHALL BE FULLY RESPONSIBLE FOR DAMAGE OF UTILITY LINES.
5. CONTRACTOR SHALL TAKE NECESSARY PRECAUTIONS TO PROTECT ANY TREES AND/OR VEGETATION NOT MARKED TO BE REMOVED FROM CONSTRUCTION DAMAGE. EXISTING TREES TO REMAIN SHALL HAVE A BARRIER ERRECTED AT DRIP LINE. AREAS WITH THE BELOW TYPE OF FENCING SHALL BE KNOWN AS THE 'PROTECTED AREA(S)'.
 - 5.1. FENCING: PROTECTION AREA TO FOLLOW THE RATIO OF 1' RADIUS PER 1" OF TREE DIAMETER AT BREST' HEIGHT (DBH).
 - 5.2. POSTS TO BE STEEL CHAINLINK, SPACED 8'-0" O.C. WITH OHIO UNIVERSITY DESIGN STANDARDS SNOW FENCING OR GRANITE POLYETHYLENE CONSTRUCTION FENCING, EXPOSED HEIGHT ABOVE GRADE SHALL BE 4'-0".
6. NO CONSTRUCTION ACTIVITIES ARE TO OCCUR WITHIN PROTECTED AREA. (SEE NOTE 5 ABOVE) THE PROTECTED AREA IS NOT TO BE USED FOR STORAGE OF CONSTRUCTION MATERIALS, NOR IS IT TO BE DRIVEN OVER WITH ANY VEHICLE OR EQUIPMENT.
- 6.1. WHERE IT IS NOT PRACTICAL TO STAY OUT OF THE TREE PROTECTION AREA, THE LARGEST POSSIBLE PROTECTION AREA IS TO BE DESIGNATED, AND APPROPRIATE MEASURES ARE TO BE USED TO MINIMIZE DAMAGE TO THE TRUNK, LIMBS, AND ROOTS OF EACH TREE.
- 6.2. IF ROOT SYSTEMS OF TREES ARE EXPOSED DURING THE DEMOLITION OR CONSTRUCTION, PROVIDE THE FOLLOWING MAINTENANCE PROCEDURES:
 - a. PRUNE MINOR ROOTS (LESS THAN 2" DIAMETER) AS NEEDED WITH SHARP PRUNERS OR SAW.
 - b. MAJOR ROOTS (2" DIAMETER OR MORE) ARE NOT TO BE SEVERED UNLESS SPECIFICALLY AUTHORIZED BY THE OHIO UNIVERSITY PROJECT MANAGER. ONCE AUTHORIZED, SEVER MAJOR ROOT(S) WITH SAW; PROVIDE A CLEAN CUT.
 - c. ROOTS EXPOSED FOR MORE THAN 2 DAYS ARE TO BE PROTECTED FROM DESICCATION.
 - d. REMOVE ONLY DAMAGED PORTIONS OF THE ROOTS.
 - e. ADD 3 SHREDDED TOPSOIL AS BACKFILL. DO NOT USE CLAY OR EXCAVATED MATERIAL. ALL TOPSOIL MUST BE APPROVED BY OHIO UNIVERSITY PROJECT MANAGER PRIOR TO THE INSTALLING.
 - f. FERTILIZE ROOT SYSTEM WITH NU-ARBOR 5-1-6 LIQUID ROOT FERTILIZER OR APPROVED EQUAL; APPLY PER MANUFACTURER'S RECOMMENDATIONS.
 - g. IF MATERIAL IS UNCOVERED OR DETECTED THAT MAY CONTAIN ANY OTHER REGULATED MATERIAL, THE CONTRACTOR SHALL IMMEDIATELY NOTIFY THE OHIO UNIVERSITY PROJECT MANAGER.
7. COORDINATE ALL WORK INVOLVING HAZARDOUS MATERIAL WITH OHIO UNIVERSITY PROJECT MANAGER AND OHIO UNIVERSITY HEALTH AND SAFETY (EHS).
8. COORDINATE THE DISPOSAL OF HAZARDOUS MATERIALS BY EPA ID NUMBER ZONES ON CAMPUS THROUGH OHIO UNIVERSITY PROJECT MANAGER.
9. THE CONTRACTOR SHALL BE RESPONSIBLE FOR DAY TO DAY ON SITE SAFETY. OHIO UNIVERSITY MAY ADVISE THE CONTRACTOR OF OBVIOUS SAFETY DEFICIENCY.
10. IT IS THE CONTRACTOR'S RESPONSIBILITY TO PROVIDE ALL MSDS INFORMATION TO THE OHIO UNIVERSITY PROJECT MANAGER PRIOR TO THE START OF WORK.
11. CONTRACTOR SHALL REMOVE FROM PROJECT SITE ALL TRASH AND CONSTRUCTION DEBRIS DAILY.
12. CONTRACTOR SHALL BE RESPONSIBLE TO CLEAN STREETS AND SIDEWALKS DAILY OF ANY CONSTRUCTION DEBRIS.
13. CONTRACTOR SHALL REMOVE EXCESS TOPSOIL FROM PROJECT SITE AND DELIVER TO A CAMPUS LOCATION OFF DARIY LANE NEAR THE COMPOST FACILITY. CONTRACTOR MAY RE-USE TOPSOIL IF EXISTING SOIL MEETS OR EXCEEDS SOIL SPECIFICATIONS.
14. CONTRACTOR SHALL VERIFY ALL DIMENSIONS AND ELEVATIONS PRIOR TO START OF WORK AND BRING ANY DISCREPANCIES TO THE ATTENTION OF THE OHIO UNIVERSITY PROJECT MANAGER, OR UNIVERSITY'S REPRESENTATIVE FOR RESOLUTION.
15. CONTRACTOR SHALL PROVIDE TEMPORARY BARRIERS TO KEEP PUBLIC OUT OF THE LIMITS OF CONSTRUCTION.

TRAFFIC CONTROL NOTES

1. TWO WAY, ONE LANE TRAFFIC SHALL BE MAINTAINED DURING NORMAL BUSINESS HOURS ON EAST UNION STREET. DURING NORMAL BUSINESS HOURS, THE CONTRACTOR SHALL NOT OBSTRUCT, FENCE OFF OR BARRICADE PORTIONS OF E. UNION STREET MORE THAN EIGHT FEET NORTH OF THE SOUTH CURB IN FRONT OF THE CONSTRUCTION AREA. THIS INCLUDES ANY SUPPORTS FOR FENCING.
2. THE CONTRACTOR SHALL FURNISH PANELIZED METAL FENCING AND BARRICADES AS NECESSARY TO PROTECT CONSTRUCTION AREA. SEE SPECIFICATIONS FOR TEMPORARY FENCING.
3. THE CONTRACTOR SHALL BE RESPONSIBLE FOR ANY LANE OR PARKING SPACE CLOSURE PERMIT COSTS THAT THE CITY OF ATHENS REQUIRES.
4. ALL TRAFFIC CONTROL DEVICES USED FOR MAINTENANCE OF TRAFFIC SHALL BE FURNISHED, ERRECTED, MAINTAINED, AND REMOVED BY THE CONTRACTOR IN ACCORDANCE WITH THE OHIO MANUAL OF UNIFORM TRAFFIC CONTROL DEVICES FOR CONSTRUCTION AND MAINTENANCE OPERATIONS (MUTCD) (CURRENT EDITION).
5. TRAFFIC CONTROL FOR ANY WORK THAT RESTRICTS TRAFFIC SHALL BE ERRECTED IN ADVANCE AND SHALL BE REVIEWED BY OHIO UNIVERSITY PROJECT MANAGER AND THE CITY OF ATHENS CITY ENGINEER AT LEAST 10 DAYS PRIOR TO THE START OF WORK. OHIO UNIVERSITY PROJECT MANAGER AND THE ATHENS CITY ENGINEER SHALL BE NOTIFIED AT LEAST 2 DAYS IN ADVANCE OF ANY ROAD CLOSURE IMPLEMENTATION OF THE MAINTENANCE OF TRAFFIC PLAN. ALL MAINTENANCE OF TRAFFIC SIGNS SHALL BE COVERED OR REMOVED FROM VIEW OF TRAFFIC WHEN THEY ARE NOT APPLICABLE, AS DETERMINED BY THE CITY OF ATHENS ENGINEER.
6. IF THE CONTRACTOR IS NOT PROVIDING PROPER MAINTENANCE OF TRAFFIC, THE UNIVERSITY WILL INSTALL THE APPROPRIATE TRAFFIC CONTROL DEVICES AT THE CONTRACTOR'S EXPENSE.
7. NORMAL BUSINESS HOURS: MONDAY THRU FRIDAY - 7:00AM TO 6:00PM.

McGill Smith Punshon, Inc.
 3700 Park 42 Drive Suite 190B
 Cincinnati, Ohio 45241-2097
 Tel. 513-759-0004 • Fax 513-563-7099
 Engineers • Architects • Surveyors
 Planners • Landscape Architects

Drawn By	CFB	Project Mgr.	DJF
CAD File	13412008-COV-00-CLASS GATE		
X-Ref File	13412008-BAS-00	CLASS GATE	
	13412008-TLB-01-CLASS GATE		
Issue/Revision	Revision Number	Date	
BID SET		11/16/15	

© COPYRIGHT 2015, MCGILL SMITH PUNSHON, INC.

**COLLEGE GREEN UPGRADE
 CLASS GATE AND TUNNEL
 OHIO UNIVERSITY**
 ATHENS, OHIO 45701
 ATHENS COUNTY, OHIO

Sheet Title	DEMOLITION PLAN
Project No.	13412.00
Scale	1/8" = 1'-0"
Sheet No.	L2.0
File No.	13-412

Ohio Utilities Protection Service
 Call Before You Dig
 1-800-362-2764
 CALL TWO WORKING DAYS BEFORE YOU DIG
 (NON-MEMBERS MUST BE CALLED DIRECTLY)

N:\board projects\13000\13412\01\13412008-COV-00-CLASS GATE.dwg, 1.0.DWG, 11/17/2015 10:02:02 AM, c:\hps, 1:1